

Needs Analysis Report

Alumwell Estate, Walsall

West Midlands

What next...?

Money Saved. Quality Assured.



Needs Analysis Report
Alumwell Estate, Walsall
West Midlands

Report Commissioned by
The Church at Junction 10

Funded by
The Birmingham & Black Country Community Foundation

Delivered by
Wider Impact Consultancy
www.widerimpact.com

birmingham &
black country
community foundation



Supported by



fair
share

Lottery money where it's needed most

widerimpact

Contents

Sections	Description	Page
1.0	Executive Summary	1
1.1	Introduction	1
1.2	Aims and Objectives	1
1.3	Our Approach	2
1.4	Our Findings	2
1.5	Recommendations	4
1.6	Presentation of Findings	6
2.0	Acknowledgements	7
3.0	Terms of Reference	8
3.1	Introduction	8
3.2	Community Needs Assessment	8
4.0	Methodology	9
4.1	Introduction	9
4.2	Desk Research	9
4.3	Field Research	11
4.4	Members of the Church at Junction 10 Questionnaire	12
4.5	Video Interviews	12
5.0	Desk Research Findings	13
5.1	Introduction	13
5.2	Population	13
5.3	Ethnicity	13
5.4	Religion	14
5.5	Age Structure	14
5.6	Community Resources	15
5.7	Deprivation Issues	16
5.8	Crime and Anti-Social Behaviour	17
5.9	Education	19
5.10	Employment (Economic Activity)	21

5.11	Employment (JCA Claimants)	22
5.12	Health	23
6.0	Field Research Findings	24
6.1	Introduction	24
6.2	Questionnaire Analysis (Partner Agency Members)	24
6.3	Fair Share Trust Questions	30
6.4	Members of the Church at Junction 10 Questionnaires	32
6.5	Walsall Youth Services Young Peoples' Survey	37
6.6	Focus Groups / Workshops	39
6.7	The Church at Junction 10 Congregation	39
6.8	Young People's Workshop	43
6.9	The Church at Junction 10 Staff Workshop	46
6.10	Meet the Architect Workshop	48
6.11	Consultation Minhaj-UI-Quran Mosque	48
6.12	Alumwell Community Venues	49
6.13	The Church at Junction 10	49
6.14	Observational Findings / Meetings	50
6.15	Video Interviews	51
6.16	Minhaj-UI-Quran Mosque / Gateway Enterprise Centre	52
6.17	Observational Findings / Meetings	52
6.18	St Johns Church	53
6.19	Observational Findings / Meetings	53
6.20	Alumwell Innovation Centre	53
6.21	One to One Meetings / Strategic Workshops	54
7.0	Summary of Research Findings	56
7.1	Introduction	56
7.2	Population	56
7.3	Community Resources	56
7.4	Deprivation Issues	57
7.5	Community Consultation / Field Research	57

7.6	Partner Agency Members' Responses	57
7.7	Community Consultation	58
7.8	Site Visits	59
7.9	One to One Meetings / Strategic Workshops	60
8.0	Recommendations	62
8.1	Introduction	62
9.0	Conclusions	65
9.1	Introduction	65
9.2	Good Practice	65
9.3	Future Challenges	66
9.4	The Way Forward	66
Appendix A	Plan Gateway Youth Drop-In Centre	67
Appendix B	Minhaj-UI-Quran Mosque Workshop (Male Committee Members)	68
Appendix C	Minhaj-UI-Quran Mosque Workshop (Female Members)	72
Appendix D	Minhaj-UI-Quran Mosque Workshop (Youth Members)	76
Appendix E	Partner-Agency Questionnaire	81
Appendix F	Community Questionnaire	83

1.0 Executive Summary

1.1 Introduction

The key objective of this commission has been to support key aims of the Fair Share Trust Programme on the Walsall based Alumwell estate:

1. To build capacity: additional / more focused activities and programmes may be developed which support Alumwell. In joining together the broader educational / learning network and provision, added value may be given.
2. To build social capital: skills development, raising aspirations, involvement of the community in interviews / focus groups etc. will promote communication and learning skills
3. To improve sustainability: the groups and networks that currently exist within the Alumwell will benefit from working together and sharing ideas, which give a firmer base for continuing to work together when the Fair Share Trust ceases.

1.2 Aims and Objectives

Our work on the commission has been delivered in two distinct parts:

1. Community Needs Assessment – to carry out a community needs assessment on the Alumwell estate, with objectives to:
 - i. identify the current needs of the Alumwell community
 - ii. identify how well placed organisations such as the Church at Junction 10 are to meet such needs
 - iii. make recommendations on how organisations such as the Church at Junction 10 should move forward to meet the needs of the Alumwell community
2. Education Campus - to ascertain how the concept of an Education Campus could move forward, and explore what the vision for an Alumwell / Junction 10 Educational Campus would be.

1.3 Our Approach

We have used a number of research approaches including detailed desk research and intensive field research to gain an in-depth understanding of key issues, challenges and opportunities regarding the Alumwell estate.

1.4 Our Findings

Based on research terms of reference, our findings are presented under a number of key headings:

Population

Alumwell has a diverse, predominantly Christian population, with a significant percentage representing the Muslim community. It is also noticeable that the area has a higher percentage of 10 to 17 year olds than surrounding areas and England as a whole. We feel this is a significant issue, as it is our experience that on such deprived estates, failure to take appropriate action is likely to result in future neighbourhood based challenges, such as youth related:

- unemployment
- alcohol / drug / substance abuse
- crime / anti-social behavior
- hate crimes / racism
- radicalisation

Community Resources

Despite the best efforts of the Fair Share Trust Programme, there remains a lack of appropriate community based resources and venues that have the capacity and capability to meet the needs of the Alumwell community.

We do however note recent developments that include steps by the Church at Junction 10 to update facilities, the Minhaj-UI-Quran Mosque to develop the Gateway Enterprise Centre on the ground floor of the premises and the availability of the Alumwell Innovation Centre to support community activities.

Deprivation Issues

Compared with England as a whole the Alumwell estate is an area of significant deprivation in terms of education, economic activity, unemployment and health.

We do however note significant recent improvements in issues linked to reductions in anti-social behaviour and educational achievements at GCSE level.

Partner-Agency Support

Our research has indicated a lack of neighbourhood based, co-ordinated partner-agency support on the Alumwell estate.

Community Support

We have been impressed with a high level of awareness of key deprivation issues by members of the Alumwell community.

We have also noted a willingness from all those we have consulted, which includes young, old and members of all ethnic backgrounds, to become directly involved in tackling key deprivation issues within their community.

Good Practice

We make due note of positive achievements on the Alumwell estate, which have occurred during the period of support from the Fair Share Trust Programme, such as:

- neighbourhood based youth provision
- significant reductions in anti-social behaviour
- direct support for community based groups
- improvements in education achievements
- the creation of the Gateway Enterprise Centre
- the creation of Sort All Limited
- the excellent work of organisations such as the Church at Junction 10, with the provision of initiatives such as the Food Bank and neighbourhood based community support

1.5 Recommendations

The following recommendations are tendered:

1. This report should be shared with all agencies and organisations with responsibilities for tackling deprivation and supporting members of the Alumwell community; ideally at a multi-agency event.
2. Aims of such a multi-agency event should include:
 - a. partner-agency members / Alumwell based organisations agreeing to work in close partnership for the benefit of the Alumwell community.
 - b. acknowledgement of the role faith based organisations and the Alumwell Innovation Centre can play in tackling deprivation and supporting members of the Alumwell community
 - c. acknowledgement of the role community members (young and old) can play in tackling deprivation and supporting members of the Alumwell community
 - d. agreement to adopt a neighbourhood based multi-agency approach on the Alumwell estate, which will directly involve Alumwell based organisations and local community members
 - e. partner-agency members collaborating and working together to develop the capacity and capability of Alumwell based organisations and local community members to work together for the benefit of the Alumwell community. This should include supporting organisations securing necessary funding; with particular reference to [Recommendation 4](#)
3. Consideration should be given to appointing a Neighbourhood Based Coordinator, with aims that include co-ordinating and supporting the delivery of [Recommendation 4](#). The post holder could be line managed by one of the locally based agencies such as the Church at Junction 10, with direct support from key partner-agency members. Funding for this post could be linked to [Recommendation 4 \(b\)](#).
4. Based on the concept of the delivery of a neighbourhood based multi-agency approach on the Alumwell estate, individual organisations such as the Church at Junction 10, St Johns Church and the Minhaj-UI-Quran Mosque / Gateway Enterprise Centre should:

- a. continue to build on their strengths, retaining their individual values; continuing to offer and provide individual and unique services to the local community
 - b. engage in closer collaborative work, with aims that include:
 - i. working in close partnership with other community [faith] based organisations for the benefit of the Alumwell community
 - ii. exploring opportunities to apply for joint funding / initiatives to tackle the deprivation issues highlighted at [Section 5.7](#)
 - c. urgently modernise / update their premises, with aims that include the delivery of services such as:
 - i. delivery of 'front-line' services e.g. Food Banks
 - ii. central meeting places / hub sites for community members to meet with key services, such as housing offices, social services, health, Police, regeneration teams, JobCentre Plus staff
 - iii. Job Clubs
 - iv. health / fitness
 - v. recreation / community meeting places e.g. luncheon clubs for the elderly; Youth Drop-In Centres / youth clubs (see [Appendix A](#))
 - vi. arts / theatre productions
 - vii. conference facilities
 - viii. meeting rooms / 'hot desks' e.g. bases for smaller community based organisations / social enterprises to meet / organise activities / events
5. In the case of the Church at Junction 10, we note the particular challenges highlighted at [Section 6.14](#). It is therefore our view that it is likely that the most appropriate course of action will be to re-build the Church / meeting / conference facilities on its current site. Reasons include:
- a. the organisation has a positive and meaningful role to play in tackling deprivation and supporting members of the Alumwell community
 - b. the current location is ideal. It is close to the M6 motorway, local bus / transport routes, and has excellent car parking facilities
 - c. previous attempts to modernise the building have on the whole failed, and have added to problems such as poor disabled access, cramped, dated and unsuitable offices, meeting rooms and storage facilities

- d. an inability to make best use of available floor / office space, resulting in an inability to properly support the Alumwell community, and raise sufficient revenue funding (e.g. room hire, delivery of conferences and events) to support the upkeep and general running costs of the building
- e. based on a report carried out by expert architects, it is apparent that cost of re-building far out-weighs the cost and inconvenience of further attempts to modernise the building

1.6 Presentation of Findings

With the agreement of the commissioner, we have presented our findings within two distinct reports:

Needs Analysis, which includes details of desk and field research, a summary of key findings and recommendations.

Education Campus, as an addendum to the Needs Analysis report, which includes a number of observations and additional recommendations.

2.0 Acknowledgements

We are grateful to the many individuals, who include members of voluntary, public and private sector organisations, who have kindly given up their time to share their views and experiences and have contributed to this report.

Most significantly, at the request of the commissioner, we have consulted a significant number of members of the Alumwell community, which has included young and older representatives of what is a diverse community, facing significant challenges identified in this report. We are extremely grateful for their honesty and directness in responding to our questions.

On behalf of the commissioner we also acknowledge the role of the Fair Share Trust Programme in funding this commission, and its ongoing commitment to supporting the needs and aspirations of those local community members.

3.0 Terms of Reference

3.1 Introduction

The overarching objective of the commission has been to support the key aims of the Fair Share Trust Programme on the Alumwell estate:

1. To build capacity: additional / more focused activities and programmes maybe developed which support Alumwell. In joining together the broader educational / learning network and provision, added value may be given.
2. To build social capital: skills development, raising aspirations, involvement of the community in interviews / focus groups etc. will promote communication and learning skills
3. To improve sustainability: the groups and networks that currently exist within the Alumwell will benefit from working together and sharing ideas, which give a firmer base for continuing to work together when the Fair Share Trust does not exist.

Our work on the commission has been delivered in two distinct and integrated parts:

Community Needs Assessment

Alumwell Education Campus

3.2 Community Needs Assessment

Building on previous research and on-going community consultation, we have been commissioned by the Church at Junction 10 to carry out a community needs assessment on the Alumwell estate, with objectives to:

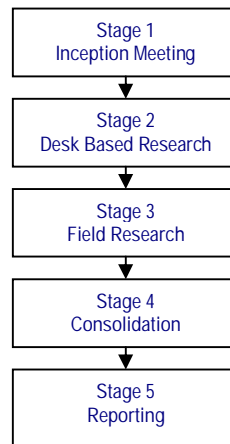
- i. identify the current needs of the Alumwell community
- ii. identify how well placed organisations such as the Church at Junction 10 are to meet such needs
- iii. make recommendations on how organisations such as the Church at Junction 10 should move forward to meet the needs of the Alumwell community

4.0 Methodology

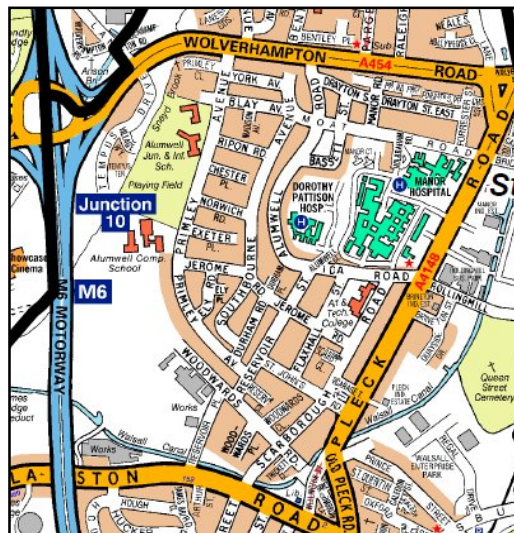
4.1 Introduction

As highlighted at Figure 1, we have taken a systematic approach to this commission.

Figure 1



4.2 Desk Research



Noting that available data and information relative to the Alumwell estate is generally linked to the Pleck Ward and surrounding areas, we have taken the opportunity, as far as feasible, to focus our research on streets and areas solely within the Alumwell estate (see adjacent map outlining streets / areas surveyed).

Table 1 outlines ONS reference areas which have therefore been utilised for analysis purposes:

Table 1

E00052341	E00052343	E00052345	E00052347	E00052350	E00052352	E00052354	E00052357
E00052342	E00052344	E00052346	E00052349	E00052351	E00052353	E00052356	E00052372

A wide variety of sources of data and information has been accessed / researched, which includes:

- Walsall Area Partnership, Area Community Plan
- Alumwell Community Venues, Buildings and Resources Survey, The Social Economy Centre, Walsall, April 2009
- Darlaston Area Local Development Order, Statement of Reason
- 2010 Indices of Deprivation / Communities and Local Government
- Office for National Statistics
- Data and information kindly supplied by West Midlands Police
- Alumwell Newsletters

Sources of information for tables and graphs include:

Graphs 1 - 3: <http://www.neighbourhood.statistics.gov.uk> – custom information

Section 6.1: <http://www.neighbourhood.statistics.gov.uk> – custom information

Graphs 4 - 6: Police statistics, provided by West Midlands Police

Graph 7: <http://www.neighbourhood.statistics.gov.uk> – custom information

Graph 8: <http://www.education.gov.uk>

Graph 9: <http://www.neighbourhood.statistics.gov.uk> – custom information

Graph 10: <http://www.nomisweb.co.uk>

Graphs 11 - 40: consultations and workshops

4.3 Field Research

At the request of the commissioner we have taken the opportunity to focus our efforts, as far as feasible, on communicating directly with representatives of the Alumwell community and partner-agency members. Field research has therefore been detailed and varied, and has included:

- Questionnaires:
 - Partner-agency members ([Appendix E](#))
 - Members of the Church at Junction 10 ([Appendix F](#))
- Access to a recent Walsall Youth Service Young Persons' Survey
- 7 focus groups / workshops held at the Church at Junction 10 and the Minhaj-UI-Quran Mosque with:
 - Members of the Church at Junction 10 congregation
 - Young people attending the Church at Junction 10 Youth Club
 - Church at Junction 10 staff members
 - A 'Meet the Architect' workshop held at the Gateway Enterprise Centre / Minhaj-UI-Quran Mosque
 - Members of the Minhaj-UI-Quran Mosque:
 - Male Committee members
 - Female members
 - Young people
- Meetings / site visits with representatives of the following Alumwell based community venues:
 - The Church at Junction 10
 - The Minhaj-UI-Quran Mosque
 - St Johns Church
 - Alumwell Innovation Centre
- Video interviews carried out at the Church at Junction 10
- One to one meetings seeking the views and opinions of a wide variety of local people / community members, and partner-agency representatives, including:
 - Fair Share Trust
 - local authority regeneration team
 - local authority education team
 - local authority youth services

- Alumwell local schools / nurseries / colleges
- Walsall College
- Vine Trust
- Chamber of Commerce
- E-ACT
- Go Alumwell Go

4.4 Members of the Church at Junction 10 Questionnaire

Questionnaires were distributed by members of the Junction 10 Church to its members and visitors to the Church, and by Wider Impact to young people attending the Friday evening Youth Club, with a planned aim to access a heterogeneous sample of respondents, and thus gain an overview of the needs of the Alumwell community.

4.5 Video Interviews

Filmed at the Church at Junction 10, opportunity was given for wider Alumwell community members and partner-agency representatives to present their views and opinions about the Alumwell estate in a one to one 'Diary Room' video format. Unfortunately, despite advanced notice, and general non-attendance of wider Alumwell community members and partner-agency representatives, we were only able to record the views and opinions of those closely connected to the Church at Junction 10.

We are however satisfied that the views recorded, supported by images of the Church, Alumwell estate and surrounding areas, presented within a DVD as an addendum to this report, have significant value and support our general findings and recommendations.

5.0 Desk Research Findings

5.1 Introduction

Situated in the Pleck Ward of Walsall, the Alumwell estate is a compact area, surrounded by main arterial roads and the M6 Motorway.



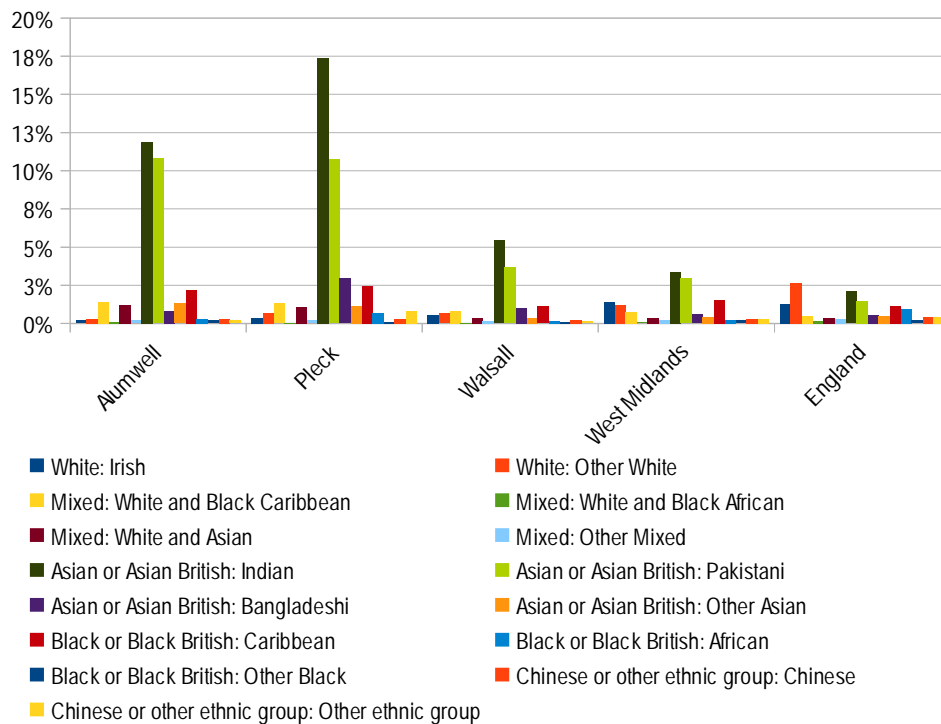
5.2 Population

The population of the constructed Alumwell area used for analysis is 5,099.

5.3 Ethnicity

Graph 1 (which compares data with wider areas), demonstrates a significant percentage of the Alumwell population (11.9%) define their ethnic group as Asian, or Asian British.

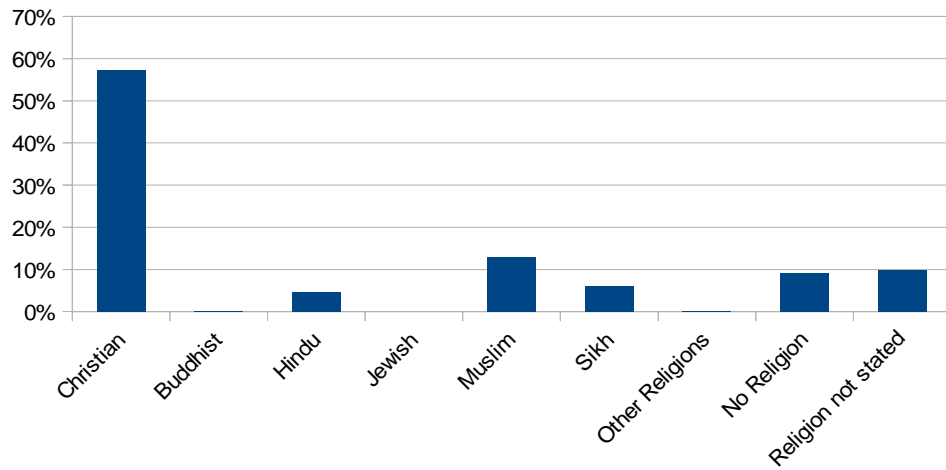
Graph 1
Ethnicity of the Alumwell Community



5.4 Religion

As Graph 2 highlights, although the population is predominantly Christian (57%), a significant percentage of the population (13%) represent the Muslim community, Sikh (6%) and Hindu community (5%).

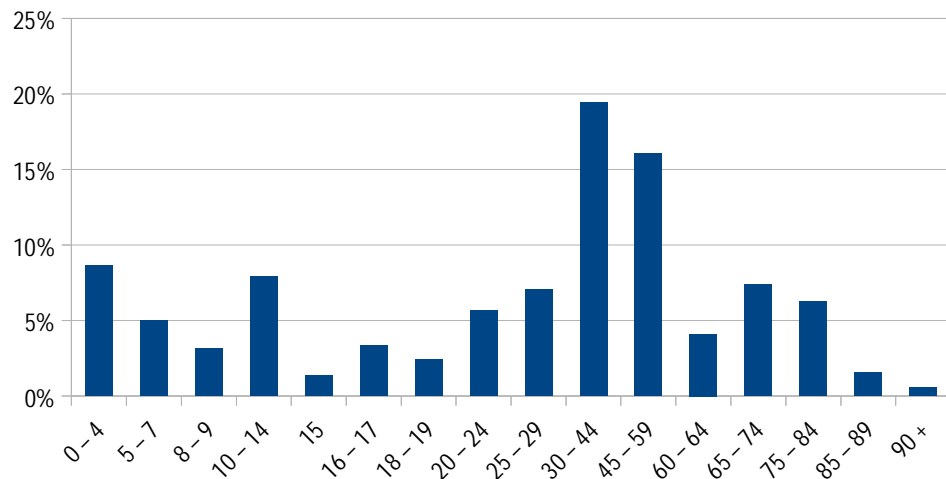
Graph 2
Religions of the Alumwell Community



5.5 Age Structure

Graph 3 highlights the age structure of the Alumwell community.

Graph 3
Age Structure of the Alumwell Community



It should also be noted that Alumwell:

- has a higher percentage proportion of population aged 10 to 14 years (7.93%), compared to Walsall as a whole (6.95%), the West Midlands region (6.89%) and England (6.57%)
- has a higher percentage proportion of population aged 16 to 17 years (3.36%), compared with Walsall as a whole (2.68%), the West Midlands region (2.61%) and England (2.51%)

5.6 Community Resources

The busy roads surrounding the area seem to serve to isolate the neighbourhood from other areas of Walsall, particularly for residents who do not have access to a vehicle, such as elderly residents and young people.

A survey carried out by the Social Economy Centre, Walsall, April 2009, has highlighted the fact that the majority of community resources situated in the Alumwell neighbourhood are located on or near main roads at the edge of the area, away from the residential streets. This is particularly evident with the public and community buildings where Alumwell residents may go to for leisure, social or educational activities. [Table 2](#) highlights Alumwell community venues, buildings and resources identified and surveyed by the Social Economy Centre.

Table 2 Alumwell Community Venues, Buildings and Resources

Venue	Location
Educational Resources	
Alumwell Business College	Primley Avenue
Alumwell Junior School	Primley Avenue
Alumwell Primary School	Primley Avenue
Alumwell Nursery School	Primley Avenue
Walsall College	Shelley Road Campus
Sure Start	Pleck Road
Health Resources	
Sai Medical Centre	Wolverhampton Road
Manor Hospital	Pleck Road
Dorothy Patterson Hospital	Ida Road
Ida Road Clinic	Ida Road

Places of Worship	
Church at Junction 10	Wolverhampton Road
Minhaj-UI-Quran Mosque	Woodwards Road
St Johns Church	Pleck Road / St Johns Road
St Johns Church Hall	Scarborough Road
Nanaksar Gurdwara	Wellington Road
Community / Public Buildings	
Unity Youth Centre	Wolverhampton Road
Pleck Library	Darlaston Road

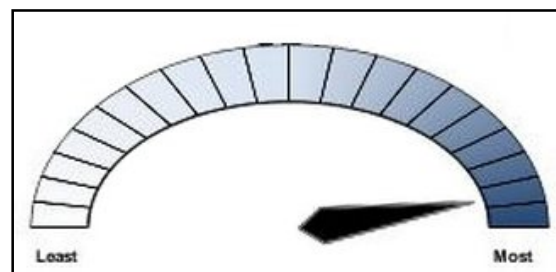
The survey noted that due to a general lack of Alumwell based community resources, it is difficult to identify a focal point of the centre of Alumwell, as a separate area, with a separate identity from neighbouring Pleck.

Whilst there are a number of venues situated within the estate, they each appear to have their individual priorities.

This appears to be compounded by the fact that the area also does not have dedicated community support personnel to work with and to encourage resident involvement. As a result, available community based assets are apparently under utilised by the wider Alumwell community.

5.7 Deprivation Issues

As outlined at [Section 4](#), we have as far as is feasible, focused on data and information linked to the Alumwell estate.



As this table demonstrates, the estate is recognised as being within the 10% most deprived wards in England.

Source: 2010 Indices of Deprivation / Communities and Local Government; Office for National Statistics; Valuation Office Agency

The following tables from the same source highlights key deprivation issues on the Alumwell estate.

Crime



Education



Employment



Income

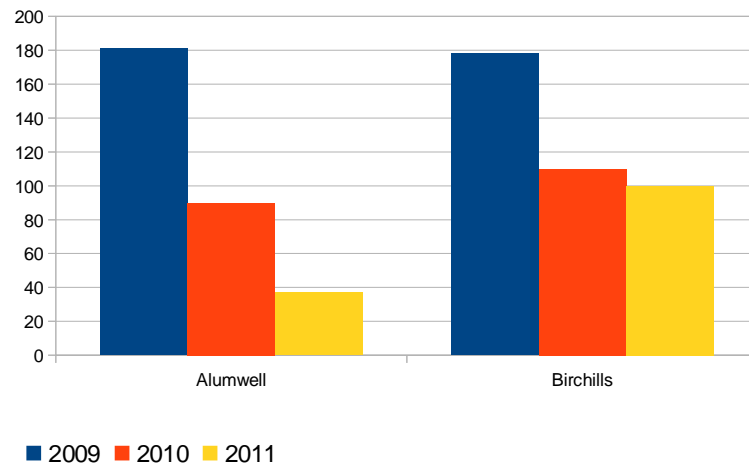


5.8 Crime & Anti-Social Behaviour

Graph 4 highlights instances of anti-social behaviour on the Alumwell estate in comparison with the neighbouring Birchills estate.

Graph 4

Anti-Social Behavior Alumwell / Birchills, 2009 - 2011

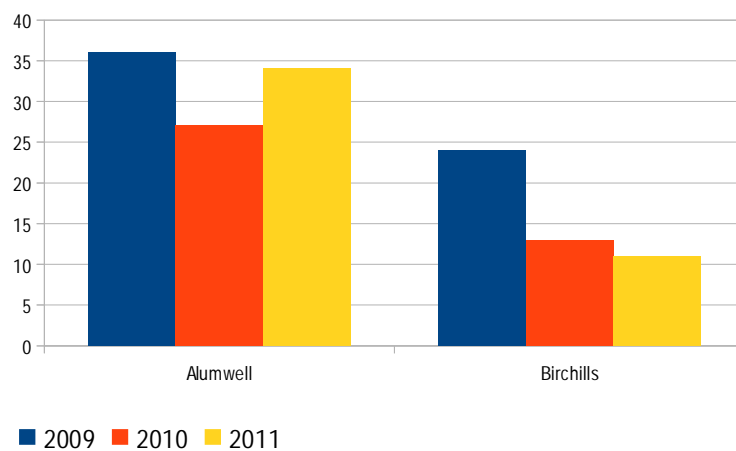


It will be noted that year on year, anti-social behaviour has fallen on the Alumwell estate. It will also be noted that such falls are more significant on the Alumwell estate than on the nearby Birchills estate.

Graph 5 highlights instances of violent crime on the Alumwell estate in comparison with the neighbouring Birchills estate.

Graph 5

Violent Crime Alumwell / Birchills, 2009 - 2011

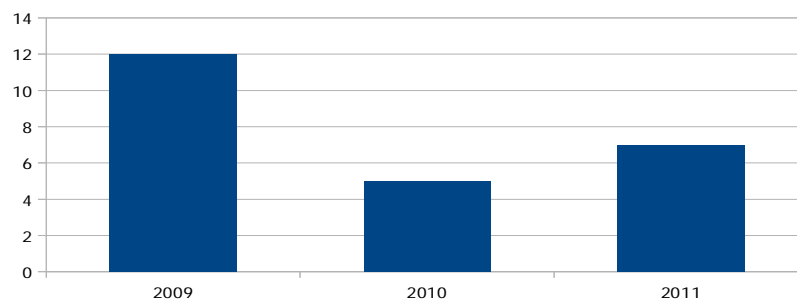


It will be noted that whilst there is a slight fall on the Alumwell estate since 2009, violent crime remains higher on the Alumwell estate in comparison with the Birchills estate.

Graph 6 highlights instances of criminal damage on the Alumwell from 2009 to 2011.

Graph 6

Criminal Damage, Alumwell Estate



It will be noted there has been a fall from 2009 to 2011.

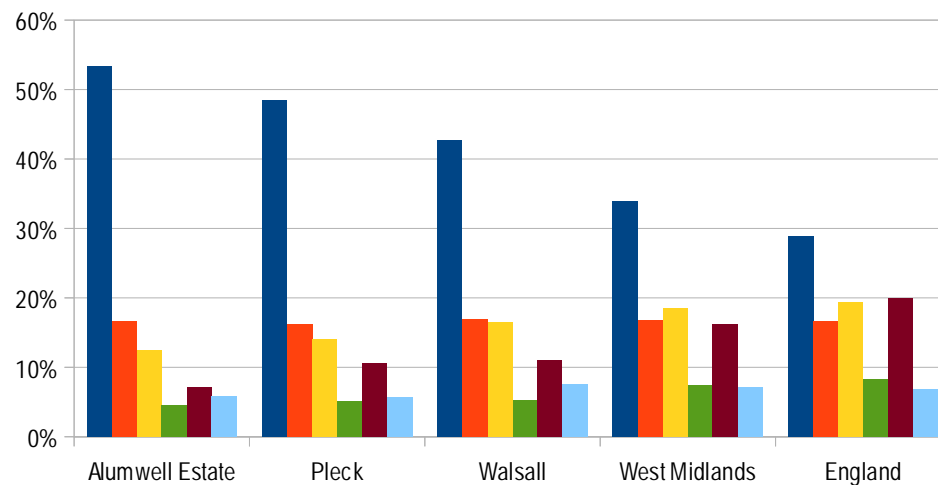
5.9 Education

As Graph 7 highlights, in the Alumwell area:

- 53% of people aged 16 to 74 years have no qualifications, compared to 49% for Pleck, 43% for Walsall, 34% in the West Midlands and 29% in England
- only 7% of people aged 16 to 74 years have attained level 4 / 5 qualifications, compared to 11% for Pleck and Walsall, 16% for the West Midlands and 20% in England
- only 4% of students aged 18 to 74 years who are economically active, are employed, compared to 25% in the Pleck ward, 37% in Walsall, 33% in the West Midlands and 33% in England
- 65% of full-time students aged 17 to 74 years are economically inactive compared to 64% in Pleck, 56% in Walsall, 61% in the West Midlands and 62% for England

Graph 7

Qualifications on the Alumwell Estate

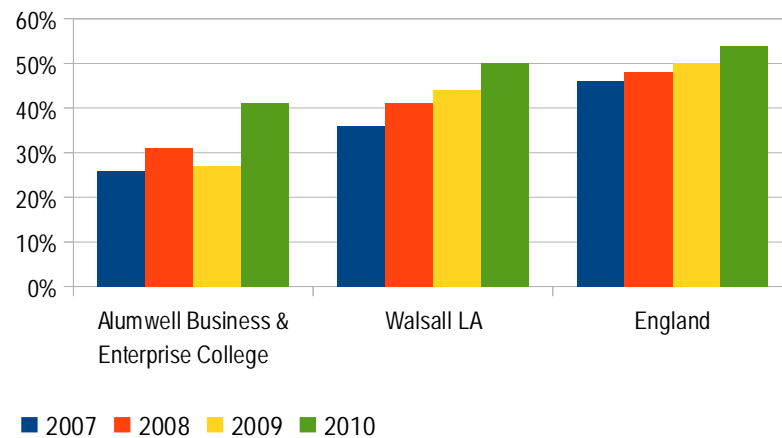


- People aged 16-74 with: No qualifications
- People aged 16-74 with: Highest qualification attained level 1
- People aged 16-74 with: Highest qualification attained level 2
- People aged 16-74 with: Highest qualification attained level 3
- People aged 16-74 with: Highest qualification attained level 4 / 5
- People aged 16-74 with: Other qualifications / level unknown

Graph 8 highlights the number of pupils achieving C – A Star (and equivalent) including English and Maths GCSEs at Alumwell Business & Enterprise College from 2007 to 2010, compared to Walsall and England as a whole.

Graph 8

Pupils Achieving GCSE grades C – A*, 2007 to 2010, Compared with Walsall and England



As Table 3 highlights Alumwell Business & Enterprise College has seen a significant increase in the percentage of pupils achieving 5 plus C – A Star, and equivalent grades, including English and Maths (15%), compared to Walsall (14%) and England (8%); however, the overall achievement (41%) is still lower than that of Walsall (50%) and England (54%).

Table 3 Pupils Achieving GCSE grades C – A Star, 2007 to 2010, Compared with Walsall and England

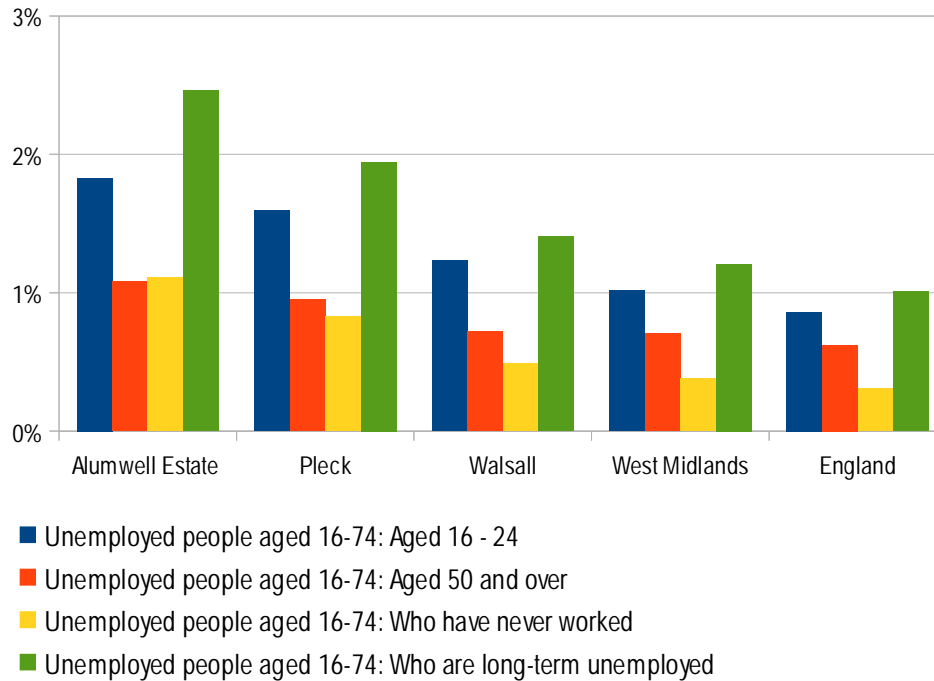
	Alumwell Business & Enterprise College	Walsall LA	England
2007	26%	36%	46%
2008	31%	41%	48%
2009	27%	44%	50%
2010	41%	50%	54%

5.10 Employment (Economic Activity)

Graph 9 highlights economic activity in the Alumwell area, compared with Pleck, Walsall, West Midlands and England as a whole.

Graph 9

Economic Activity in the Alumwell area compared to Pleck, Walsall, West Midlands and England



It will be noted that in the Alumwell area:

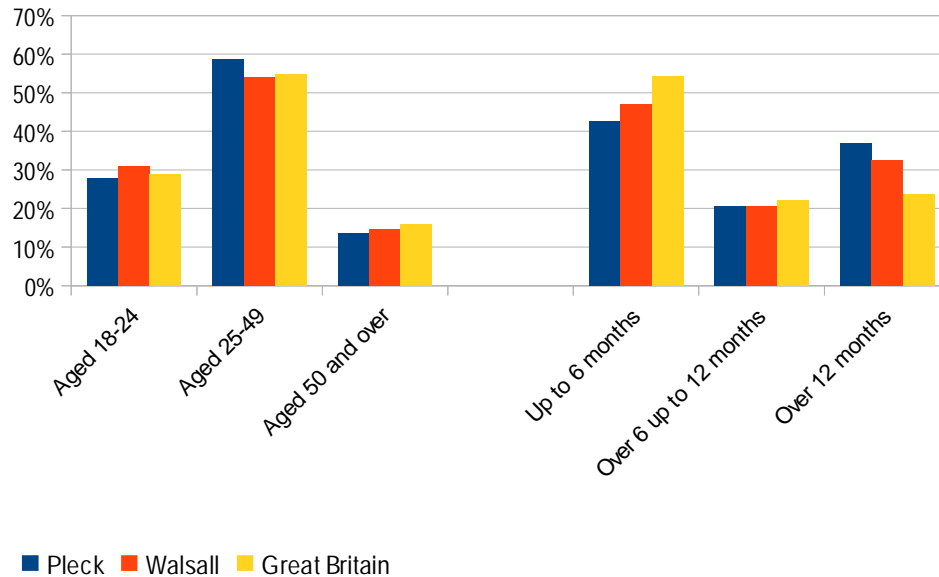
- a higher percentage of those aged 16 to 24 years are unemployed (1.8%), compared to Walsall (1.2%), the West Midlands (1.0%) and England (0.9%)
- a higher percentage of those aged 50 and over are unemployed (1.1%), compared to Walsall (0.7%), the West Midlands (0.7%) and England (0.6%)
- a higher percentage of those aged 16 to 74 have never worked (1.1%) compared to Walsall (0.5%), the West Midlands (0.4%) and England (0.3%)
- a higher percentage of those aged 16-74 are long-term unemployed (2.5%), compared to Walsall (1.4%), the West Midlands (0.2%) and England (1.0%)

5.11 Employment (Job Seekers Allowance (JCA) Claimants)

Graph 10 highlights JCA claimants from the Pleck Ward, compared to Walsall and England as a whole.

Graph 10

JCA Claimants Pleck, Walsall, England, April 2012



As Table 4 highlights claimants from age group 25 to 49 are noticeably higher at 58.6%, compared with Walsall (54.1%) and England as a whole (54.8%). It will also be noted claimants making claims over 12 months from the Alumwell Ward (36.9%), are noticeably higher than Walsall (32.5%) and England as a whole (23.8%).

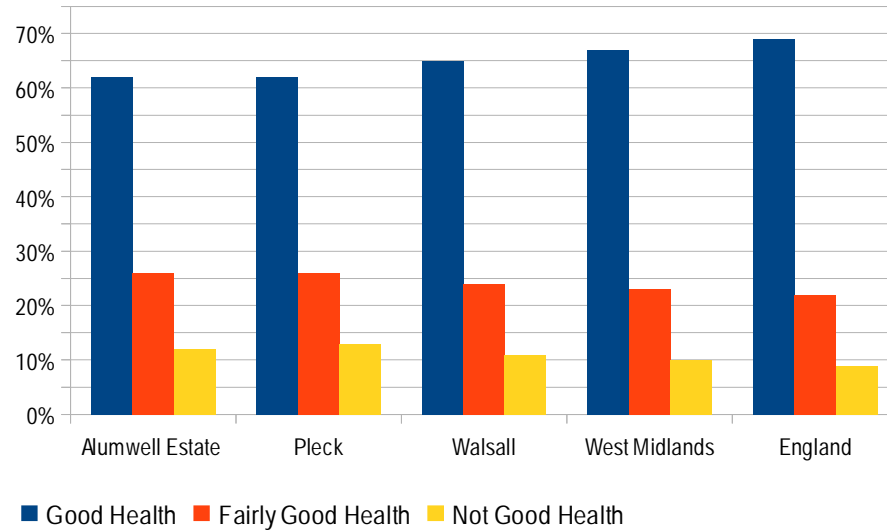
Table 4 JCA Claimants Pleck, Walsall, England, April 2012

Subject	Pleck	Walsall	Great Britain
Aged 18-24	27.8%	31.1%	29.0%
Aged 25-49	58.6%	54.1%	54.8%
Aged 50 and over	13.6%	14.6%	15.9%
Up to 6 months	42.5%	46.9%	54.2%
Over 6 up to 12 months	20.6%	20.6%	22.0%
Over 12 months	36.9%	32.5%	23.8%

5.12 Health

Graph 11 highlights the general health of Alumwell residents, compared with Pleck, Walsall, West Midlands and England.

Graph 11
General Health Alumwell Residents Compared to Other Areas



It will be noted that Alumwell has a lower percentage (62%) of those as being in good health, compared with Walsall (65%) and England as a whole (69%).

6.0 Field Research Findings

6.1 Introduction

As outlined at [Section 4](#) we have utilised a number of research tools:

- Questionnaires:
 - Partner-agency members
 - Junction 10 congregation members / wider community members
- Access to Walsall Youth Services Young Peoples' Survey
- Focus groups / workshops
- Meetings / site visits with representatives of the following Alumwell based establishments:
 - Church at Junction 10
 - Minhaj-UI-Quran Mosque
 - St Johns Church
 - Alumwell Innovation Centre
- One to one meetings
- Video interviews

6.2 Questionnaire Analysis (Partner-Agency Members)

We contacted a total of 169 Walsall based organisations, inviting them to complete and return the questionnaire at [Appendix E](#):

- 51 forwarded letters / stamped addressed envelopes
 - 135 emailed by the Walsall South Area Partnership on our behalf
- 22 questionnaires were returned for analysis from the following organisations:
- Alumwell Infants School
 - Alumwell Nursery
 - Bentley Drive Primary School
 - Breathing Space Ltd
 - First Base (Walsall)
 - Friends of Pleck Park
 - Integrated Young Peoples Service
 - J9 Accommodation
 - Sikh Recreation & Learning Centre

- Sort All Ltd
- The Holy Angels Charitable Trust
- Walsall Citizens Advice Bureau
- Walsall College
- Walsall Community Transport
- Walsall Council, Advice and Guidance Officer
- Walsall Council Link Worker
- Walsall Council, Economic Regeneration
- Walsall Link
- Walsall MBC (Children's Services)
- Walsall Society for the Blind
- Walsall South Area Partnership
- West Midlands Police

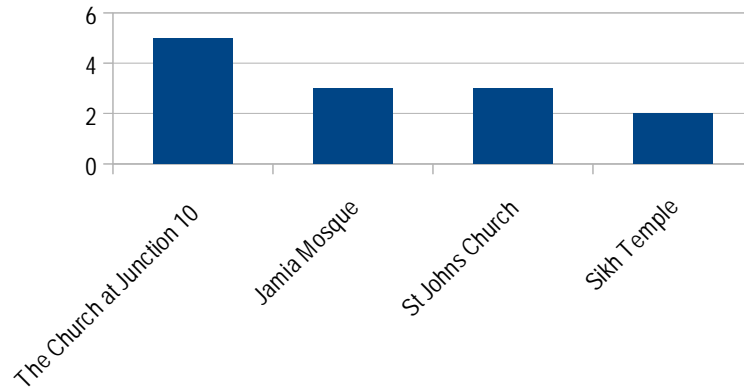
The following is a summary of responses to the question, 'Please describe your organisation's key aims and objectives':

- advice / general support - 7
- community safety / community well-being - 6
- recreation – 5
- learning – 4
- reduce landfill – 3
- work experience / jobs - 3
- support young people - 2
- health & Social Care – 1
- advice / housing support - 1

Graph 12 highlights responses to the question, 'Have you or your organisation developed links or partnerships with the following Alumwell community based establishments? '(i.e. The Church at Junction 10, Minhaj-UI-Quran Mosque, St Johns Church, Sikh Temple).

Graph 12

Have you or your organisation developed links or partnerships with the following Alumwell community based establishments?



In relation to the question, 'Have you / your organisation worked in partnership / developed links with the above establishments?' 7 of the 22 respondents stated they have never worked in partnership with / developed links with any of the establishments.

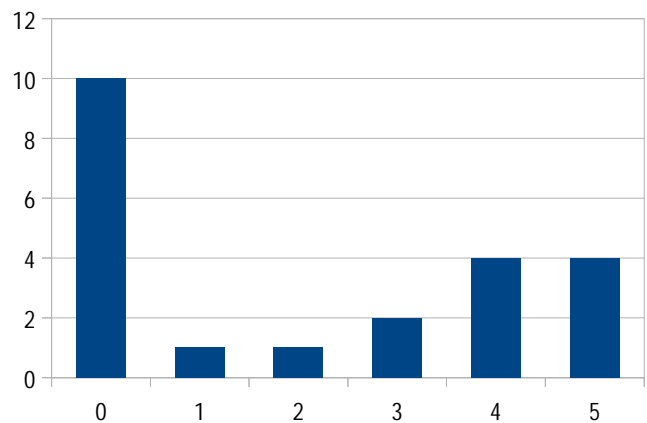
Of the 15 respondents who responded positively, the following responses have been noted:

- SRLC is a sister organisation that manages the Community Centre for the Sikh Temple management committee (Sikh Recreation & Learning Centre)
- In the past we have attended, as a school, the Church at Junction 10 at Christmas, for a number of years a member of their staff conducted assemblies in school (Alumwell Infant School)
- The previous Pastor, Pastor Price was the Chair of Governors for a number of years (Alumwell Infant School)
- The Church would deliver collective worship at least once a term - not happened recently, due to staff shortages I believe (Bentley Drive Primary School)
- School concerts take place at the Church at Junction 10 (Alumwell Nursery)
- I support the Alumwell / Pleck Children's Area Partnership, who work to agreed priorities i.e. Walsall Council's representative. I do not actually work in the Alumwell area myself, have links developed through food bank (Walsall Citizens Advice Bureau)

- St Johns Church - directly with Reverend and the learning disabilities group. Minhaj-UI-Quran Mosque - through Wider Impact and Sort All Ltd (Walsall South Area Partnership)
- I have attended meetings to talk about Sort All and what service we will be providing (Sort All Ltd)
- Invites to all local established groups and places of worship to our first public Panel Meeting. I have met with local community development worker to advocate and invite contacts within the area to panel meeting. Have had individual meetings with local voluntary groups representatives, and regularly attend the Fair Share panel meetings (Sort All Ltd)
- Link worker who collects food parcels for clients (Walsall Council)
- I have an excellent working partnership with the Church at Junction 10 Church to provide essential items and food to those in need in Walsall (Walsall Council)
- I have a very good working relationship with all members of staff. They are always willing to assist essential item when needed – J9 Accommodation

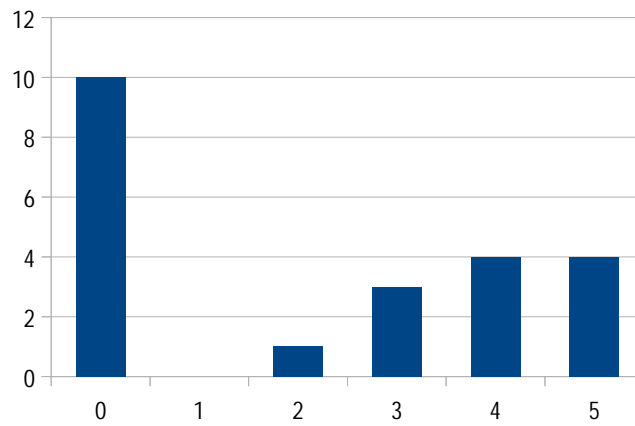
The following graphs relate to individual's responded to specific highlighted questions linked to the establishments (1 – low; 5 high; 0 no views).

Graph 13
The partnership working / links we have been involved in plays a positive role in supporting my / our organisations aims and objectives



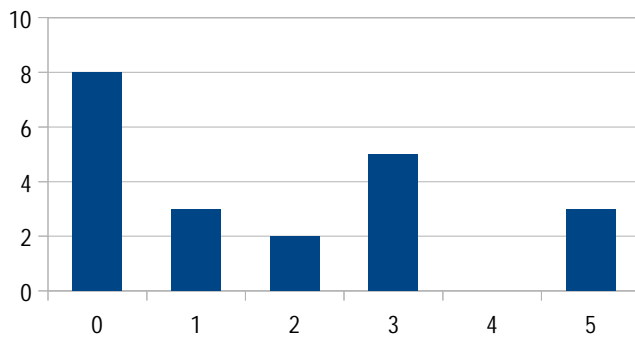
Graph 14

Those I work with are helpful and accessible



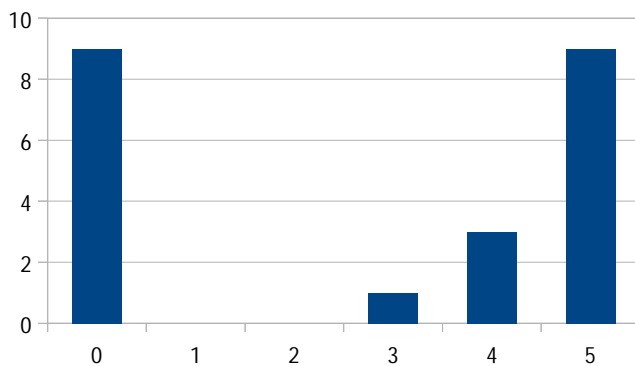
Graph 15

I am aware of the aims and objectives of the Alumwell community based establishments



Graph 16

I would value the opportunity to be more aware of how they could support my / our organisation's aims and objectives / roles etc.



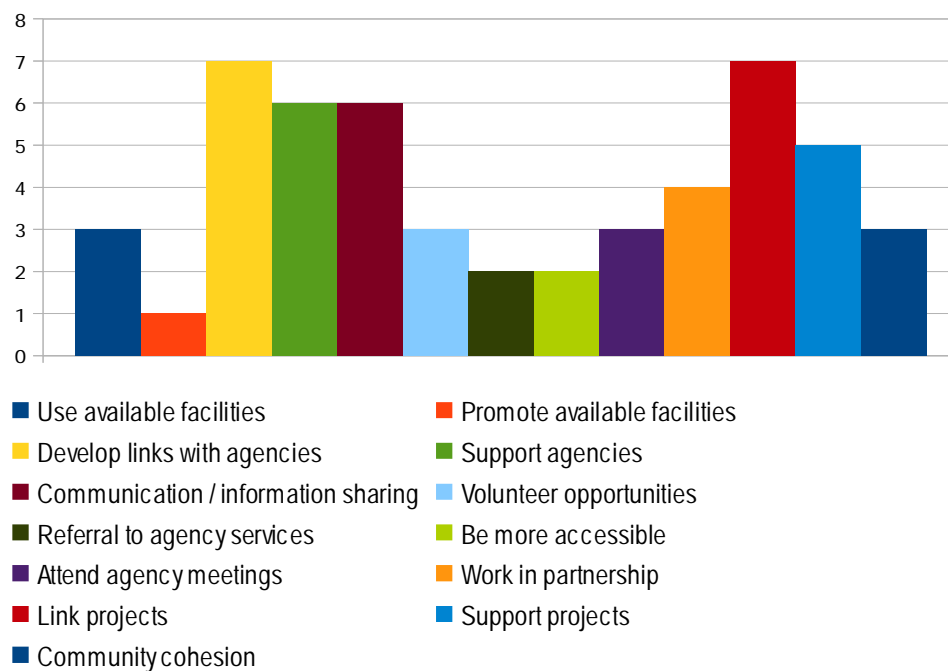
Graph 17 highlights responses to the question, 'Please list up to 3 ways Alumwell community based establishments could support your aims and objectives in the future' (16 responses were received)

The following is a summary of responses relating to specific actions:

- developing links – 7
- better communication / information sharing - 6
- providing support – 6
- linking projects – 6
- working in partnership – 5
- supporting projects – 5
- supporting community cohesion – 4
- attending meetings - 4
- using facilities already available – 3
- provision of volunteer opportunities – 3
- by being more accessible - 2
- referring clients / residents / members - 2

Graph 17

Please list up to 3 ways Alumwell community based establishments could support your aims and objectives in the future



The following is a summary of responses to the question, 'Anything else you wish to add?'

- Long-term investment is required to have a lasting effect on Alumwell youth and families
- More openness joined up communication between organisations in Alumwell
- The Alumwell magazine is informative and keeps all informed of any local issues
- I think that there was a misunderstanding of just how neglected Alumwell was initially
- A full time Community Development worker employed at the start of the programme may have seen less wastage of funds, and more fully developed and trained individuals and community groups
- The Food Bank [The Church at Junction 10] is an invaluable service and the team are brilliant
- The Church at Junction 10 are providing an excellent service to the community

6.3 Fair Share Trust Questions

We were requested to include the following questions within the questionnaire by the Fair Share Trust, to obtain respondents' feed back in relation to Fair Share Trust activities on the Alumwell estate.

Question 1

'What have been the local challenges for Alumwell, and how were they achieved by investing in local asset?'

The following (in no particular order) is a summary of the key issues noted in response to this question

- Community cohesion
- Employment
- Housing
- Use of community venues
- Access to training opportunities
- Childcare provision
- Social deprivation
- Antisocial behaviour
- Environment issues – land contamination and air pollution

The following 7 individual comments were noted:

- Lack of community cohesion. Employment and housing issues. Lack of maximising the use of local community venues to bring about more community cohesion and improve facilities for youth activities
- Some adults are reluctant to attend courses out of their area. Parents wish to support their children. Local access to ESOL, ICT and basic skills. Child care provision improved access to training
- Social deprivation and low educational attainment are key issues in this area
- Antisocial Behaviour - little investment but very effective in reducing ASB
- Sorry but cannot see any physical benefits to Alumwell. Local challenges - land contamination and air pollution. Enterprise Zone is a new challenge and opportunity
- Different faiths and cultures living in close proximity - but not always mixing can be a challenge
- Alumwell has had a history of being just outside funding catchment areas and therefore has had very little professional development workers and council officers working in and for the estate. Fair Share recognised this and funding was allocated to the area. Unfortunately due to years of neglect by the local authority and professional workers, local community and voluntary groups were poorly managed and badly supported. Over the years the professional help and the work of local people has increased and local community groups and their activities have also grown, I think, as a direct result of the Fair Share Fund. Youth clubs were created through local people and a building was fully furnished for community use (570), in which many groups could access and use. This was something that helped groups in Alumwell to have a neutral space. There are local places of worship that also provide community space for groups. There has been an increase in many new developments, and local support for a joint community venue is picking up pace, from the Minhaj-UI-Quran Mosque

Question 2

'What outcome do you feel Fair Share has achieved in Alumwell?'

6 of those responding stated they were not aware of Fair Share Trust and activity in Alumwell

12 of those responding did not answer this question

The remaining 4 respondents provided the following information:

- funding has supported adult and family learning opportunities
- we would work to improve the outcomes through organisations
- the Fair Share Trust has funded Worth Unlimited and Sort All. It has also funded a local accessible youth club, Go Alumwell Go, which need to find a venue as soon as possible. Local youth work training and youth activities. The creation of new local community groups. Support and consultation to the Minhaj-UI-Quran Mosque community development plans and an aim for a Community Centre for all in the future
- the creation of a local Social Enterprise, Sort All Ltd which will continue to improve the local environment and the up skilling of local people, as well as help towards creating a more cohesive area working across the board linking with all groups and key individuals

6.4 Members of the Church at Junction 10 Questionnaire (Appendix F)

Of the 181 questionnaires returned for analysis:

- 115 were received from females
- 64 were received from males
- 2 gender not indicated
- 18 respondents stated they were disabled

Table 5 outlines ages of respondents surveyed.

Table 5 Respondents' Ages

Under 16	17 to 30	31 to 40	41 to 50	51 to 60	61 to 70	71 to 80	80 +	Other	Not indicated
17	26	35	29	29	22	11	5	4	3
9%	14%	19%	16%	16%	12%	6%	3%	2%	2%

Graph 18 highlights the ethnicity of respondents.

Graph 18
Respondent's Ethnicity

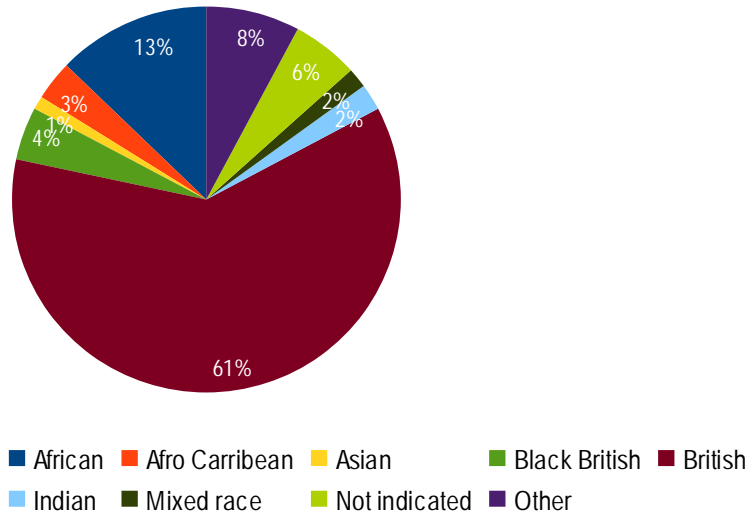


Table 6 outlines the locations / home addresses of the 141 respondents who answered this question.

Table 6 Locations / Home Addresses of Respondents (141)

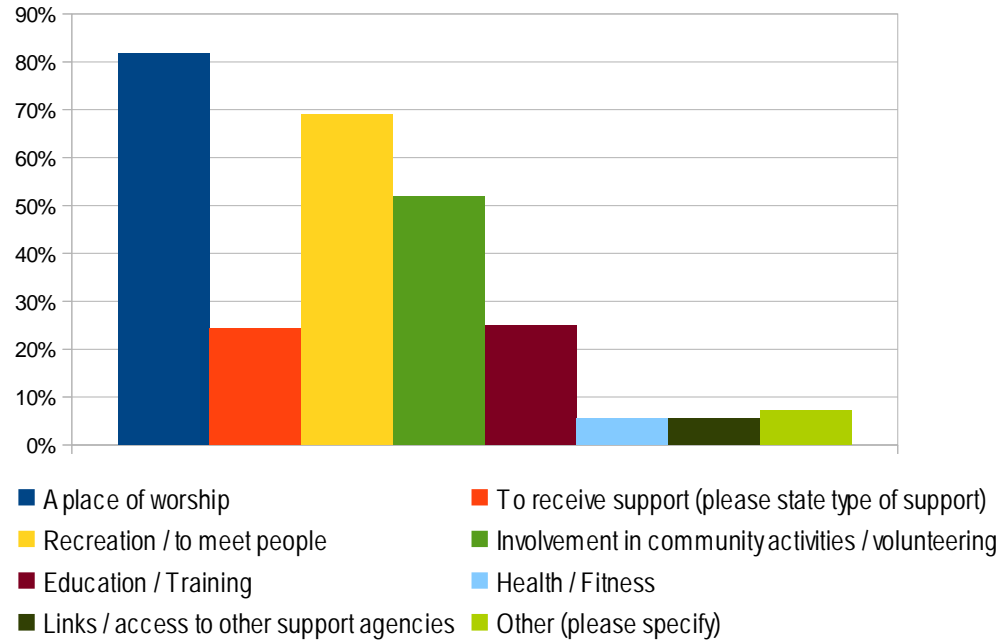
Location	%
Birmingham	13%
Dudley	3%
Bath & North East Somerset	1%
Staffordshire	6%
Portsmouth	1%
London	1%
Worcestershire	1%
West Midlands	21%
Walsall	42%
Wolverhampton	13%

Graph 19 highlights responses to the question, 'For what purpose have you utilised the Church?'

(1 – low; 5 high; 0 no views).

Graph 19

For What Purpose Have You Utilised the Church?

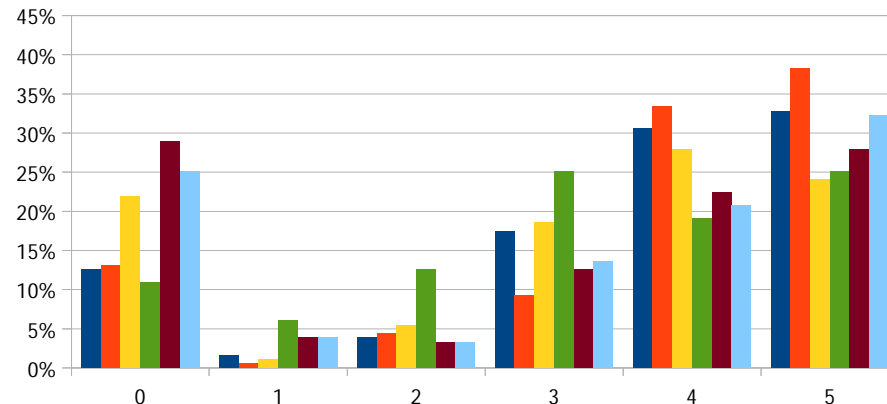


Graph 20 highlights respondent's views on aspects of the Church at Junction 10

(1 – low; 5 high; 0 no views).

Graph 20

Respondents Views on the Church at Junction 10

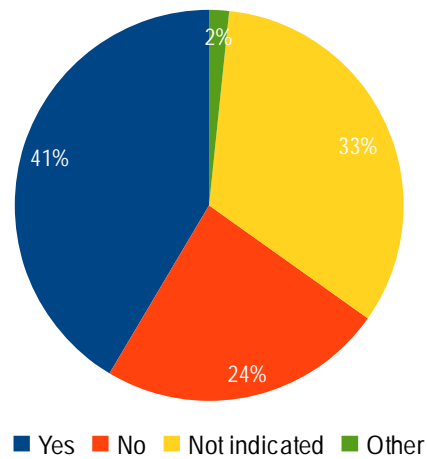


- The Church meets my personal needs and expectations
- It is a valuable resource that helps to deliver a stronger community
- The Church supports the whole Alumwell community (young and old)
- The car park, entrance to the Church, meeting rooms and facilities are easy to access
- It would be good if there were more meeting rooms available at the Church
- Available meeting rooms at the Church need updating and modernising

Graph 21 highlights respondents' views on whether there is a need to provide additional services / activities to support the local community.

Graph 21

A Need to Provide Additional Services to Support the Local Community



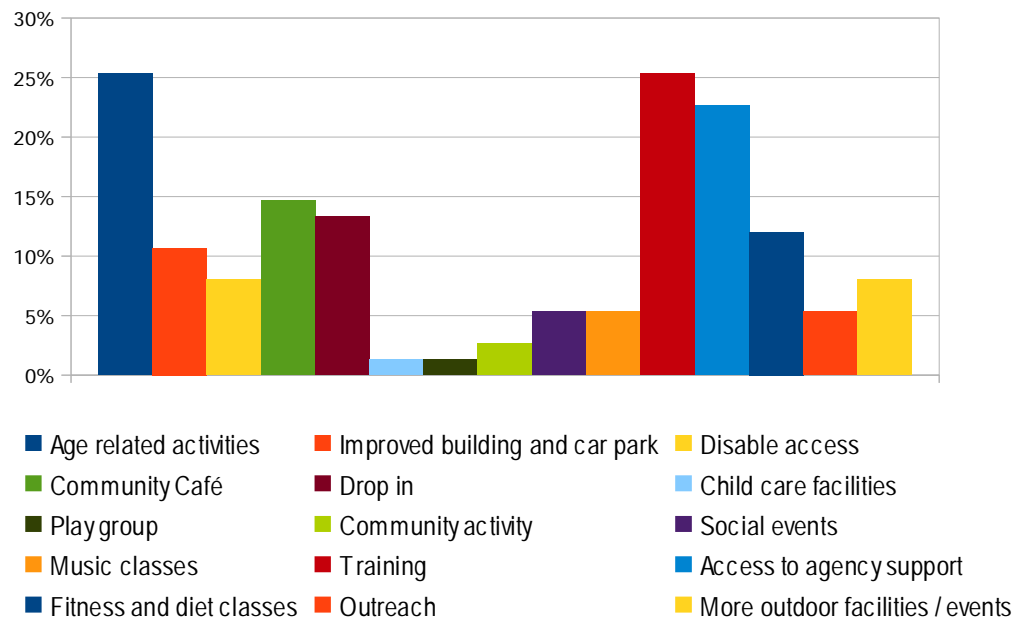
Graph 22 highlights details of additional services required / suggested by respondents.

As will be noted, the 3 most rated are:

- Age related activities – 19
- Training – 19
- Access to agency support – 17

Graph 22

Additional Services Required / Suggested

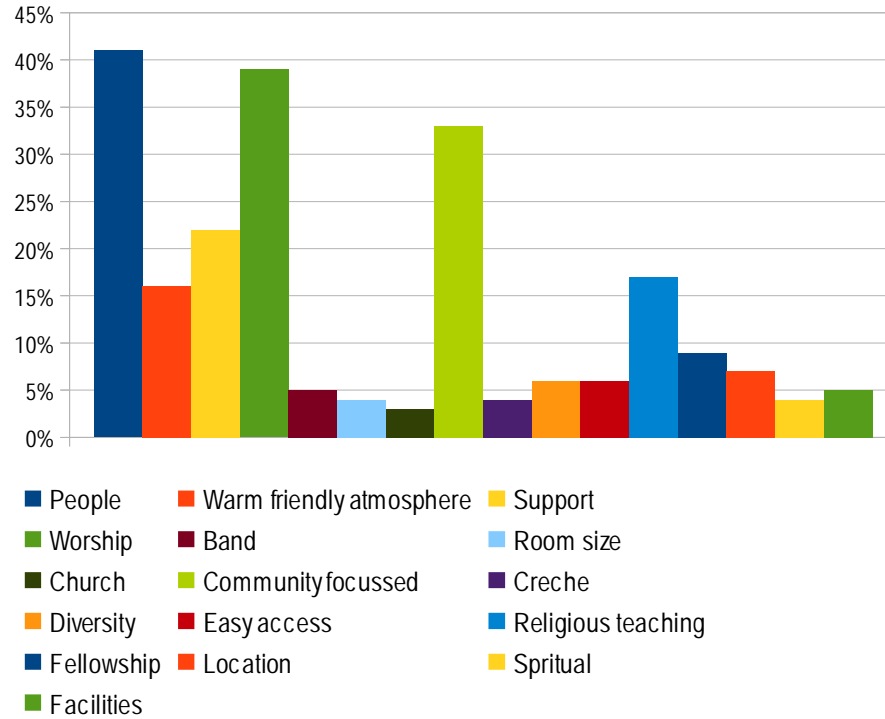


Graph 23 highlights responses to the question, 'Please list up to 3 good things about the Church at Junction 10.'

As will be noted, the 3 most rated are:

- People – 70
- Worship – 67
- Community focussed – 56

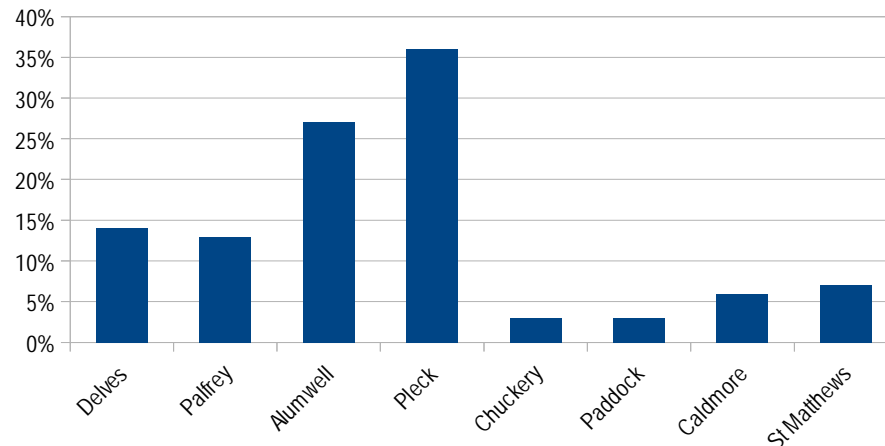
Graph 23
Three Good Things About the Church at Junction 10



6.5 Walsall Youth Service Young Peoples' Survey

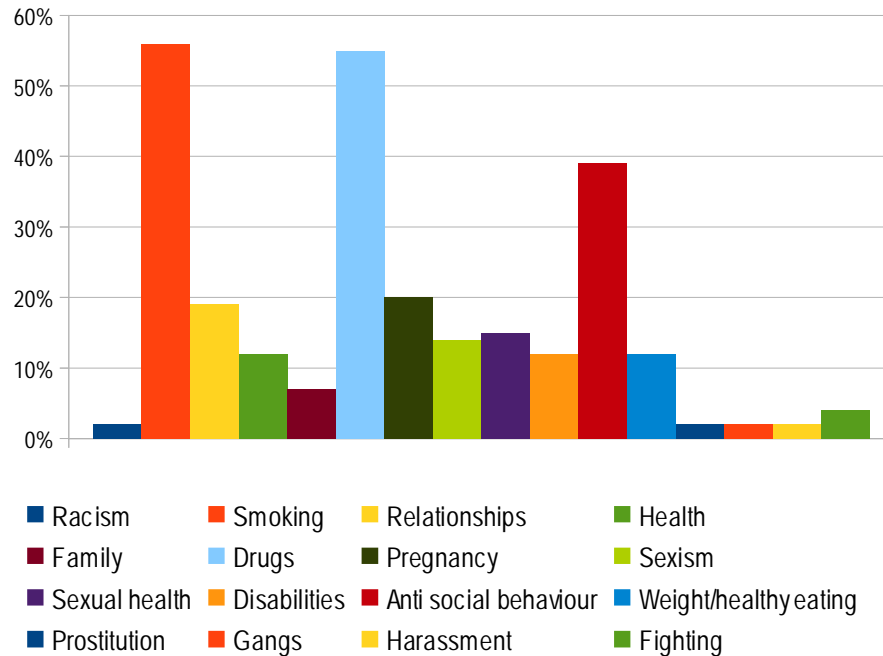
We are grateful to Walsall Youth Service for early access to a recent survey of 84 young people (61 male / 39 female) from local areas highlighted at Graph 24.

Graph 24
Location of Young People Surveyed



Graph 25 highlights key issues that the young people are most concerned about.

Graph 25
Key Issues Concerning Young People



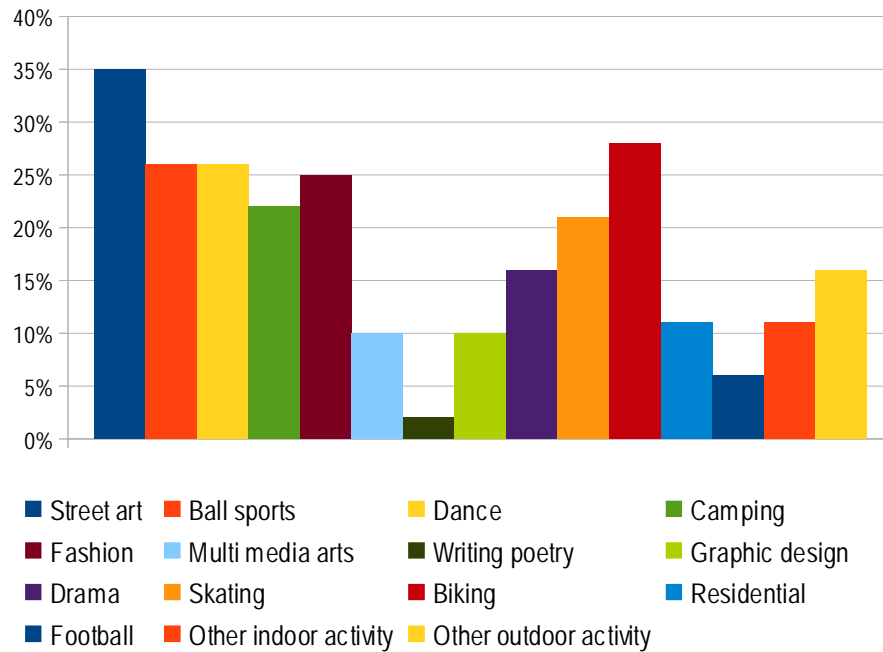
It will be noted that the three issues young people are most concerned about are:

- smoking
- drug abuse
- anti-social behaviour

Graph 26 highlights the key activities the young people would most like to see available to them in their areas. It will be noted that the young people are looking at a more or less even spread of activities.

Graph 26

Key Activities Young People Would Most like to be Available in Their Areas



6.6 Focus Groups / Workshops

As outlined at [Section 4.3](#) we have taken opportunity to consult a number of groups:

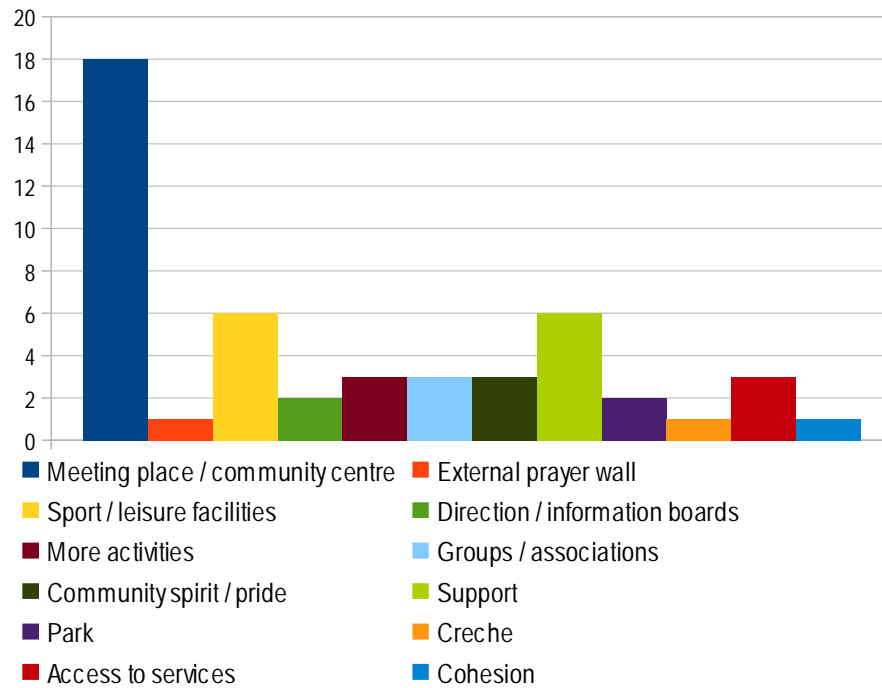
- the Church at Junction 10 congregation (afternoon and evening)
- Alumwell young people attending the Church at Junction 10 Friday evening Youth Club
- Church at Junction 10 staff members
- Alumwell young people attending a 'Meet the Architect' workshop held at the Minhaj-UI-Quran Mosque / Gateway Enterprise / Youth Drop-In Centre
- Members of the Minhaj-UI-Quran Mosque:
 - male Committee / Management Committee members
 - female members
 - young people

6.7 Church at Junction 10 Congregation

Graph 27 highlights responses to the question, 'What do you think is missing in Alumwell for the community?'

Graph 27

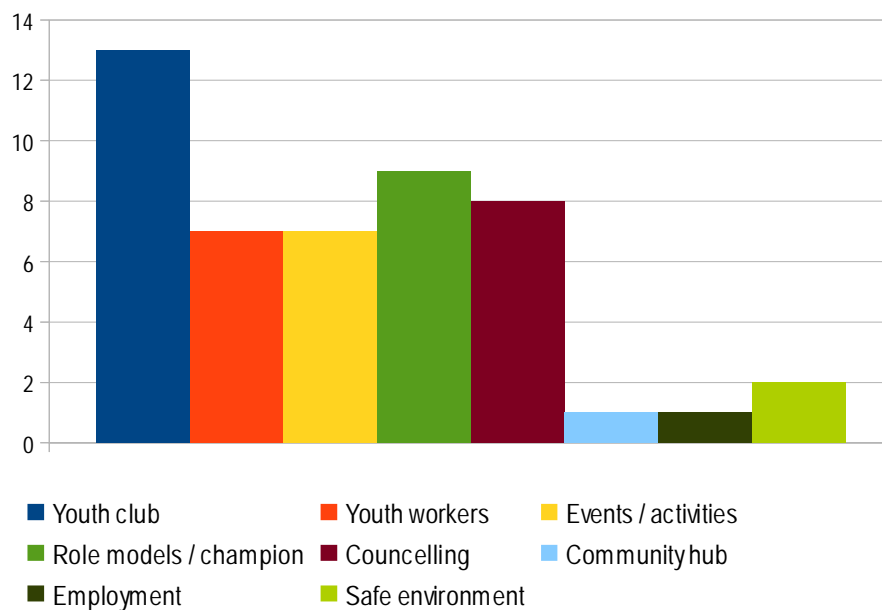
What do you think is Missing in Alumwell for the Community?



Graph 28 highlights responses to the question, 'What do you feel is missing in Alumwell for young people in particular?'

Graph 28

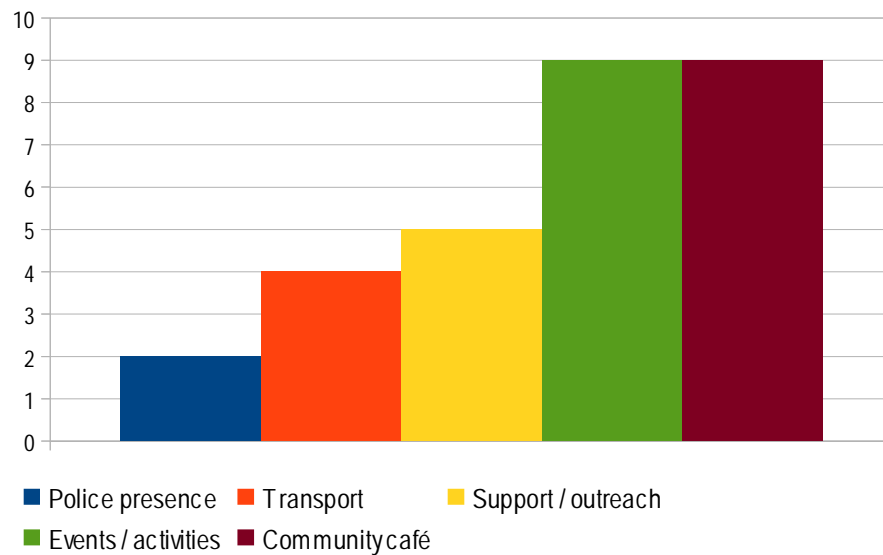
What do you feel is missing in Alumwell for young people in particular?



Graph 29 highlights responses to the question, 'What do you feel is missing for the elderly in particular?'

Graph 29

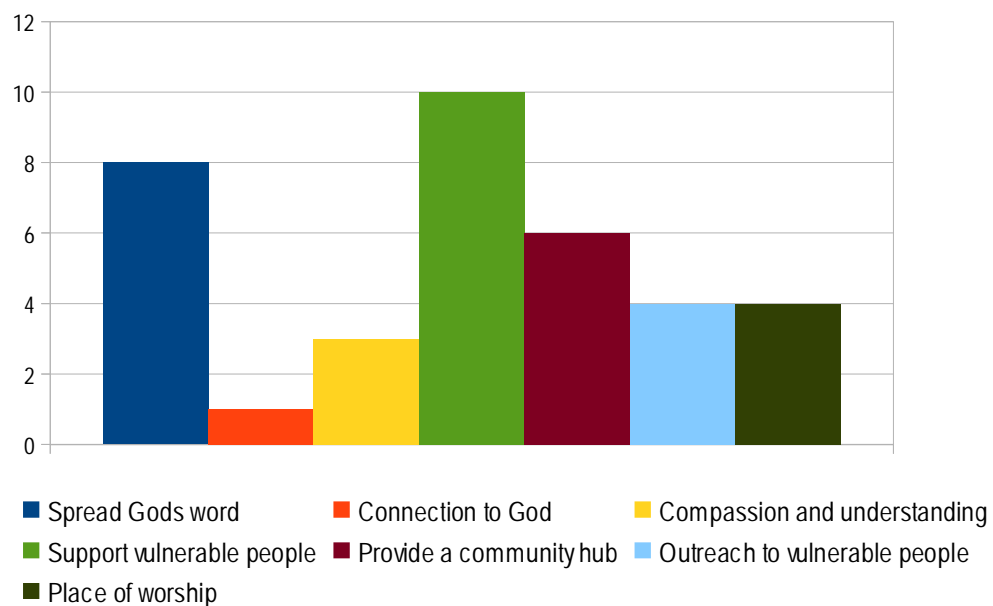
What do you feel is missing for the elderly in particular?



Graph 30 highlights responses to the question 'What do you think should be the main aims / objectives of Churches in this area?'

Graph 30

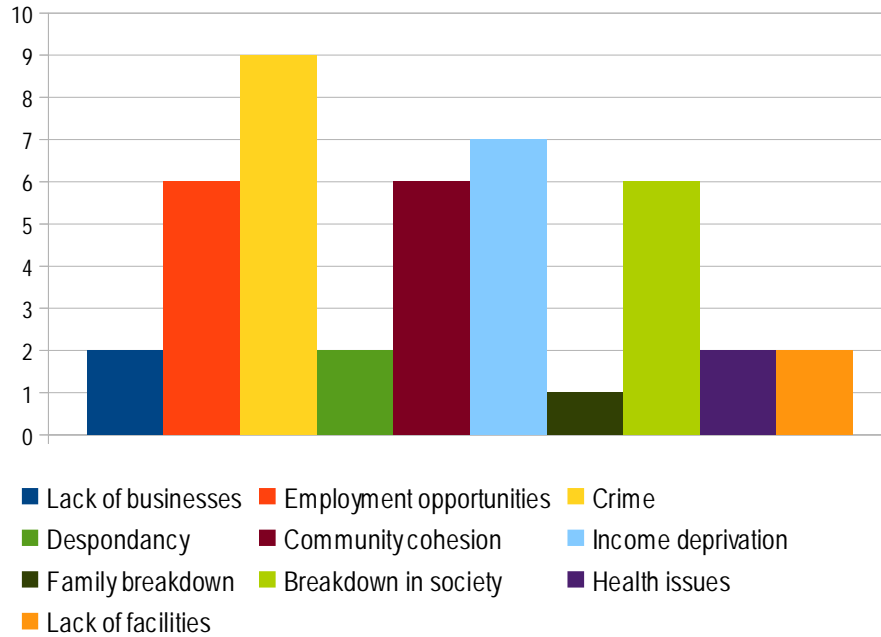
What do you think should be the main aims / objectives of Churches in this area?



Graph 31 highlights responses to the question, 'What challenges do you think the community you live in faces in the future?'

Graph 31

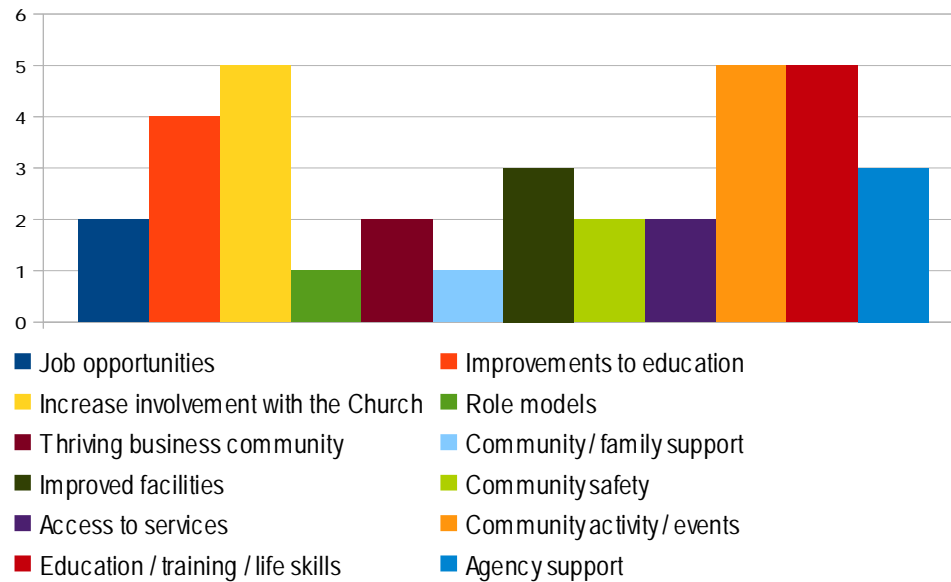
What challenges do you think the community you live in faces in the future?'



Graph 32 highlights responses to the question, 'What could be done to make life in the community better?'

Graph 32

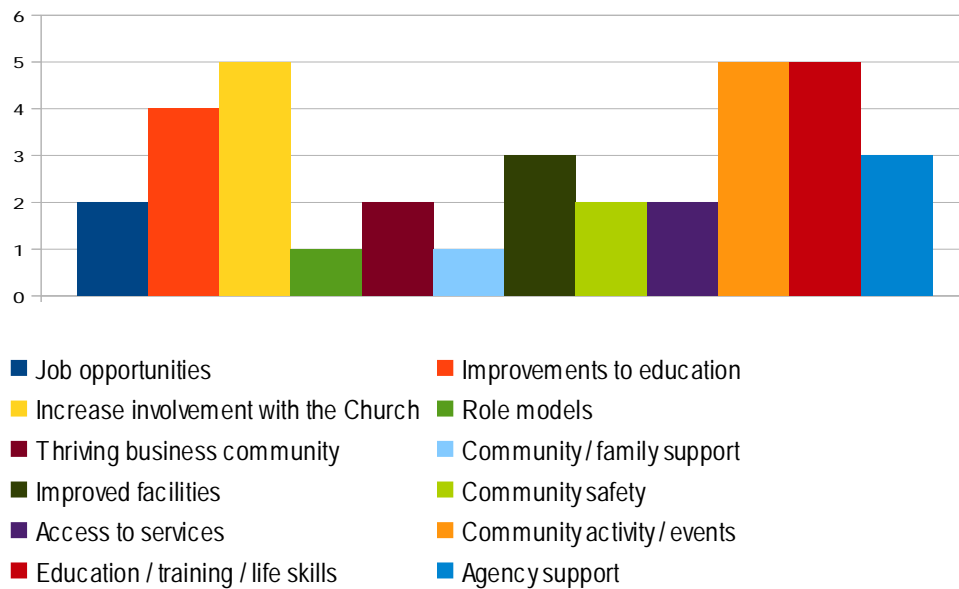
What could be done to make life in the community better?'



Graph 33 highlights responses to the question, 'What role could the Church have in supporting the community?'

Graph 33

What role could the Church have in supporting the community?



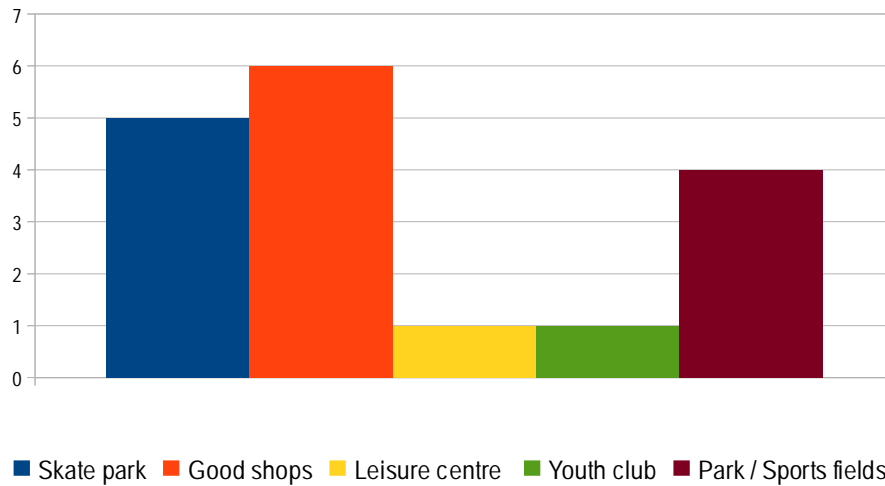
6.8 Young Peoples' Workshop

14 young people, mainly from the Alumwell estate took part in a workshop held during a Friday evening Youth Club at the Church at Junction 10. The group aged 11 to 16 years, comprised of 8 males and 6 females.

Graph 34 highlights responses to the question 'What do you think is missing in Alumwell for the Community?'

Graph 34

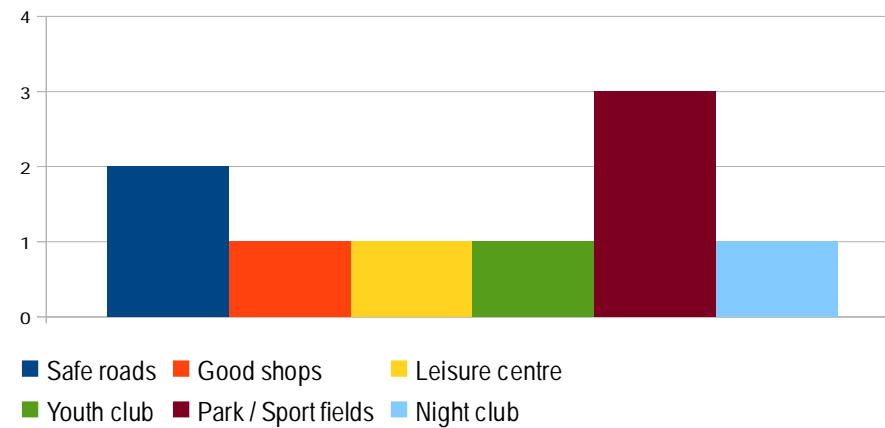
What do you think is missing in Alumwell for the Community?



Graph 35 highlights responses to the question, 'What do you think is missing in Alumwell for young people in particular'

Graph 35

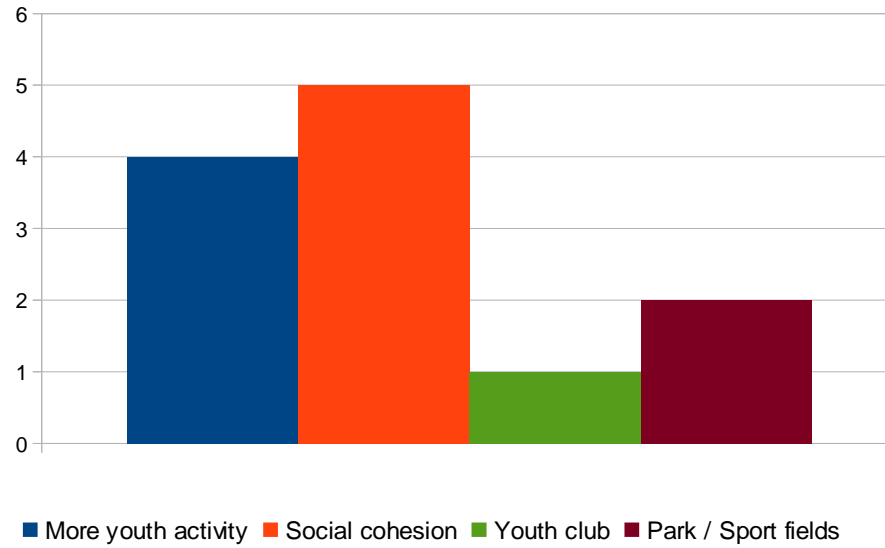
What do you think is missing in Alumwell for young people in particular



Graph 36 highlights responses to the question 'What do you think should be the main aims / objectives of the Church at Junction 10?'

Graph 36

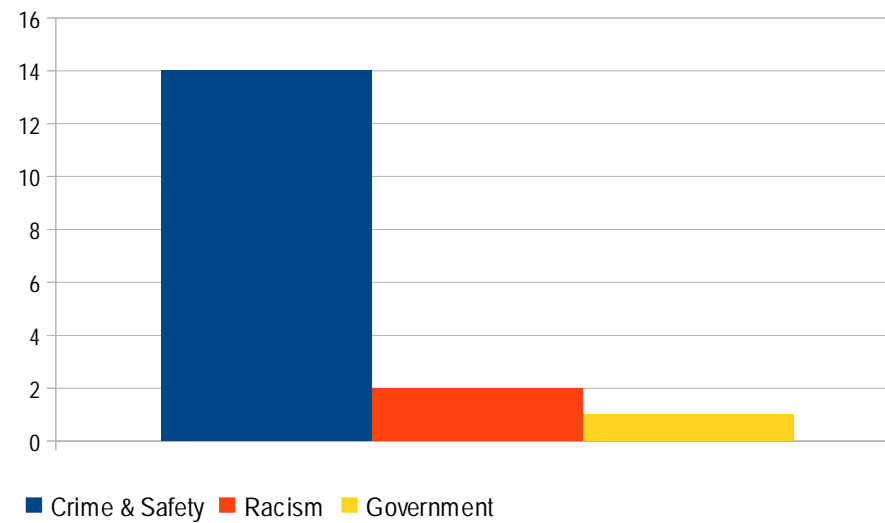
What do you think should be the main aims / objectives of the Church at Junction 10?



Graph 37 highlights responses to the question, 'What challenges does the community you live in face in the future?'

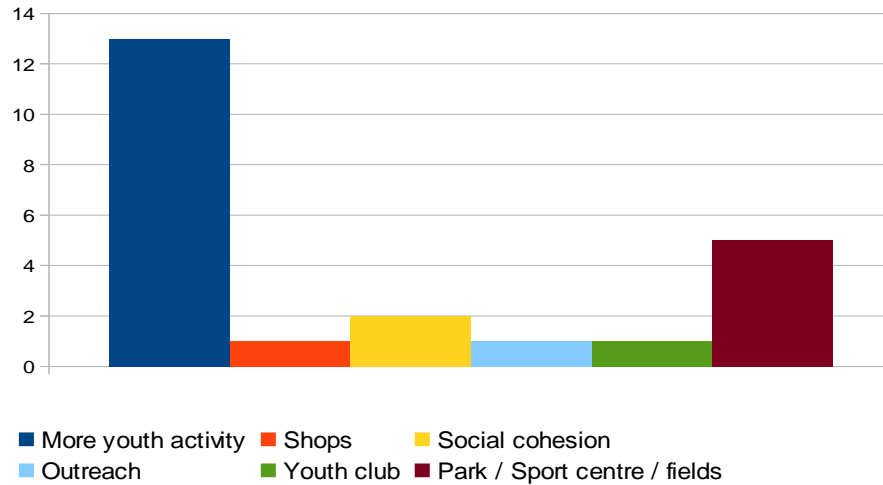
Graph 37

Community Challenges



Graph 38 highlights a 'Wish List' offered to the young people.

Graph 38
Wish List

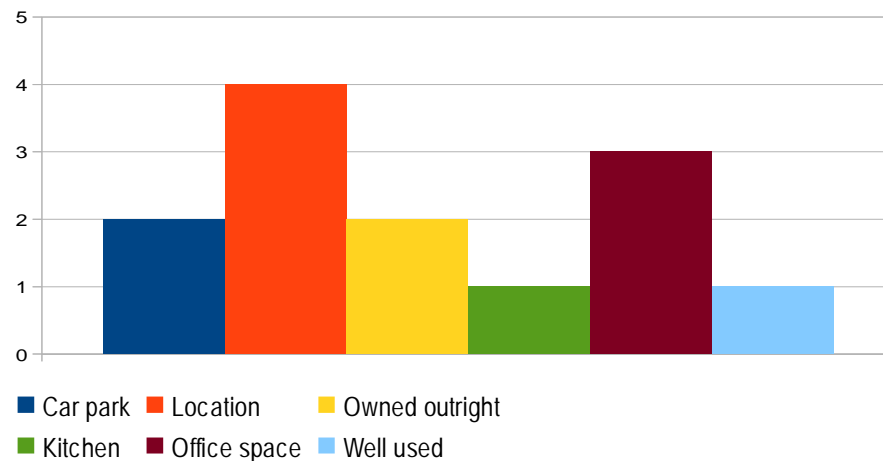


6.9 Church at Junction 10 Staff Workshop

We have taken the opportunity to meet with key staff from the Church, which has included the Pastor, Youth Leader, Food Bank Co-ordinator and Administrator.

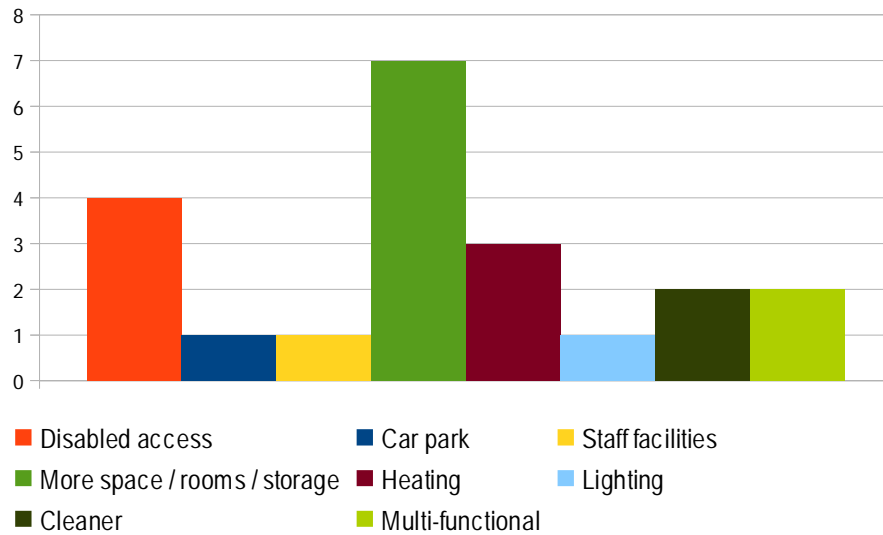
Graph 39 highlights responses to the question, 'What is good about the building (Church at Junction 10)?'

Graph 39
What is Good About the Building



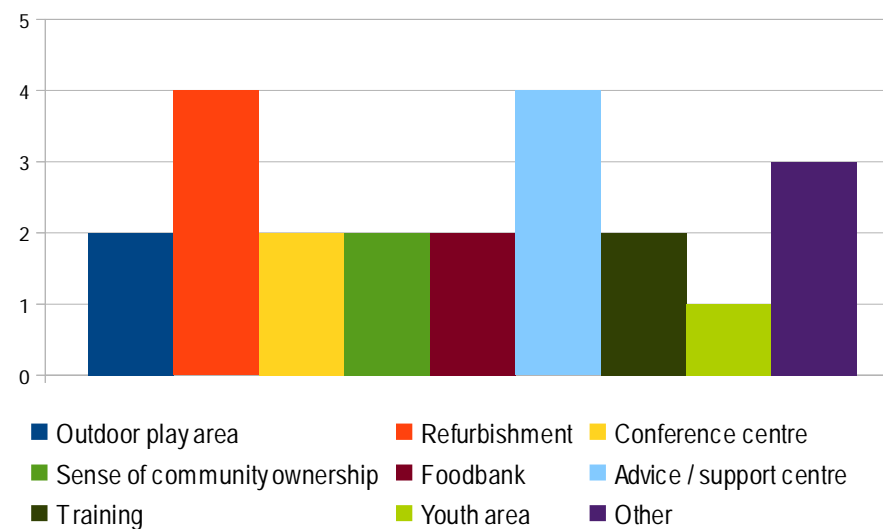
Graph 40 highlights responses to the question, 'What could be done to improve the building?'

Graph 40
How to Improve the Building



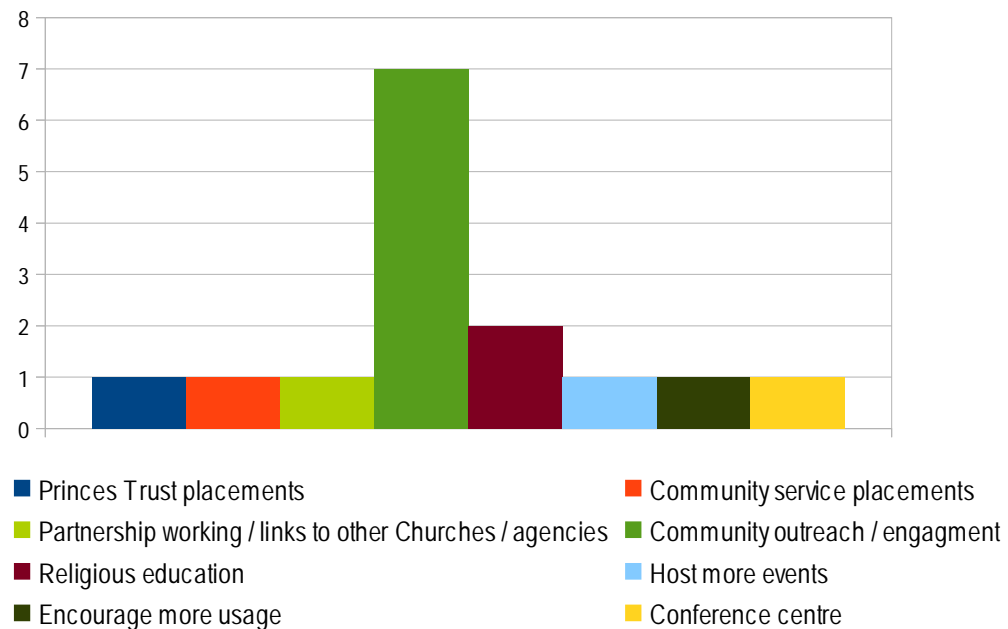
Graph 41 highlights responses to the question, 'What is the future of the building?'

Graph 41
Future of the Church at Junction 10



Graph 42 highlights responses to the question, 'What opportunities are open to the Church in relation to supporting the Alumwell community?'

Graph 42
Opportunities Open to the Church at Junction 10



6.10 Meet the Architect Workshop

Appendix A is a plan of Youth Drop-In Centre due to be established as part of the development of the Gateway Enterprise Centre, which is to be situated on the ground floor, below the Minhaj-UI-Quran Mosque, Woodward's Road, Alumwell.

The plan is a result of a 'Meet the Architect' workshop held at the premises during April 2012, when young people from the wider Alumwell community met with the architect commissioned to design a purpose built Youth Drop-In Centre. We feel the plan clearly outlines the type of layout and activities desired by young people within such facilities.

6.11 Consultation Minhaj-UI-Mosque

We have taken the opportunity to utilise information gained as a result of the work we are carrying out in support of the Minhaj-UI-Quran Mosque to develop and deliver an Enterprise Centre on the first floor of the main Mosque building on Woodward's Road, Alumwell.

Appendices B, C and D are summaries of workshops carried out with male Committee members, female members, and young people.

6.12 Alumwell Community Venues

As outlined at Section 4.3, we have taken the opportunity to visit and meet key representatives of the following Alumwell based community venues:

- The Church at Junction 10
- The Minhaj-UI-Quran Mosque
- St Johns Church
- Alumwell Innovation Centre

6.13 The Church at Junction 10



Situated on the edge of the Alumwell estate, and close to the M6 Motorway since 1981, the Church at Junction 10 is a Christian organisation, and has been serving the local community since 1978.

Table 7 highlights internal community centred activities currently being undertaken by the Church, which are in addition to ad-hoc weddings and funerals.

Table 7 Church at Junction 10 Internal Activities

Activity	Frequency	Client Group	Average Number Attending
Sunday Services	Sundays (AM / PM)	Open	350 / 100
Food Bank	Weekly (Monday / Thursdays)	Community	Not fixed
Youth Club	Weekly (Friday evenings)	Young people	25
323 Club	Weekly (Tuesday evenings)	Young people	30
Crèche	Weekly (Sunday mornings)	Toddlers	15
Mums / Toddlers Group	Twice weekly (Tuesday / Fridays)	Mums / Toddlers	30
Courses	Weekly (Wednesday)	Congregation	35
Luncheon Club	Weekly (Wednesdays)	Adults	36
General Staff Meetings	Weekly	Members / Staff	25 / 8

Table 8 highlights external, community based activities carried out by the Church.

Table 8 Church at Junction 10 External Activities

Activity	Location	Frequency	Beneficiaries	Average Number Benefiting
Care Home Teams – arts, crafts, storytelling, quizzes	Walsall areas	Monthly visits	Elderly	75 per month
'Bridging the Gap' – drop-in refreshments, second hand goods sale, counselling, money advice	Willenhall Town Centre	Daily (Monday to Friday)	Local people	50 to 100 per week
'Living Waters' – Coffee Shop / cafe / Church	Willenhall Town Centre	Daily	Local people	Start up initiative
J10 Counselling – counselling, mentoring and specialist support	Walsall areas – including Alumwell schools	Weekly	Pupils	20 / 50 sessions per month
J10 Ramblers – walking group	Walsall areas / UK walks	Monthly	Local people	12
Youth Work / mentoring / pupil support	Darlaston / Grace Academy / Youth Club	Weekly	Young people	6 to 60

6.14 Observational Findings / Meetings with Key Staff / Volunteers / Visitors

As will be noted from Tables 7 and 8, it is clear that the Church delivers direct support to the Alumwell and wider Walsall communities. Aims and objectives include a desire by key staff and the wider congregation to work in partnership with other Churches and other multi-agency partners, for the benefit of the whole community; with emphasis on:

- out-reach work
- tackling community deprivation
- supporting young people in particular
- supporting community based education
- supporting the arts

It is however apparent that, whilst the Church is based at an accessible location:

- on the whole, the internal layout of the Church, and facilities available are preventing the Church to deliver and develop a full range of community and Church based activities. For example:

- access is severely limited to disabled visitors – due to a number of extensions / alterations, floors are on different levels, there is an absence of appropriate ramps and a lack of lifts to all floors / levels / meeting rooms / offices
- there is a lack of modern / appropriately equipped offices and meeting rooms
- available offices and meeting rooms are generally dated, cramped and not suitable for adaption / multi-use
- a serious lack of appropriate storage facilities
- the hall / meeting space used for the youth club / youth activities is generally not suitable for such purpose due to:
 - potential Health & Safety risks to young people and youth workers caused by obstacles such as stored tables and chairs
 - a lack of youth related facilities, such as external games / physical activity areas, and internal young people / youth spaces / facilities highlighted at [Appendix A](#)
- kitchen / catering facilities are dated and in need of updating / modernisation
- a general lack of IT support facilities, such as WiFi
- opportunities are being missed to:
 - maximise internal floor space
 - maximise external spaces
 - develop and enhance excellent initiatives such as the Food Bank and youth work / delivery
 - hire the venue out to external agencies – attracting revenue income
 - deliver the Church's mission to further support the wider Alumwell community

6.15 Video Interviews

As outlined at [Section 4](#), we have taken opportunity to carry out video interviews at the Church at Junction 10. Key outcomes include:

- An understanding regarding key deprivation issues on the Alumwell estate
- A clear commitment from members of the Church at Junction 10 to support the needs and aspirations of the wider Alumwell community

- A commitment to work in partnership with the Alumwell community and other support organisations / partner agency members
- An understanding that the Church needs to update its facilities if it is to meet the needs and aspirations of the Alumwell community

6.16 Minhaj-UI-Quran Mosque / Gateway Enterprise Centre



Located at Woodward's Road, Alumwell, the Minhaj-UI-Quran Mosque supports local and wider Muslim community members.

The Mosque is situated on the first floor of the building, and we note innovative plans to develop an Enterprise Centre / community meeting space on the ground floor of the building – the Gateway Enterprise Centre.

6.17 Observational Findings / Meetings with Key Staff / Volunteers / Visitors

The Gateway Enterprise Centre is a separate organisation to the Mosque, and has a separate constitution and Committee / Trustees, comprising of Mosque members and wider community representatives. Aims and objectives include:

- to work in partnership with other Churches and other multi-agency partners, for the benefit of the whole community – with emphasis on community integration
- facilities to be accessed by the wider Alumwell community
- to support young and old to reach their full potential; with emphasis on:
 - education
 - training
 - employment
 - leisure / community based activities

Whilst we note the need to carry out major renovations on the building and surrounding areas, we note:

- funding has been secured to commission the services of a specialist architect to deliver plans / designs and appropriate planning applications / approvals funding has been secured to deliver a Youth Drop-In Centre based within the Gateway Enterprise Centre
- funding has been secured, and agreement reached with the local authority to deliver a youth summer activity programme from the Youth Drop-In Centre
- there are opportunities for the 'Go Alumwell Go' community based group to be based at and operate from the Youth Drop-In Centre

6.18 St Johns Church



Based within the heart of the Alumwell estate, the Church is ideally positioned to support Alumwell community members.

6.19 Observational Findings / Meetings with Key Staff / Volunteers / Visitors

We have noted that the Church is community facing, and provides direct support to Alumwell residents, with a particular emphasis on supporting:

- community events / celebrations
- people with special needs / learning difficulties
- multi-faith congregations

6.20 Alumwell Innovation Centre



The Alumwell Innovation Centre is situated within the grounds of Alumwell Business & Enterprise College. Plans include the Centre becoming part of an E-ACT sponsored Academy.

The Centre can accommodate groups from 2 to 65 people, with full multi-media facilities in most meeting rooms. Facilities include:

- 65 seat theatre style auditorium
- class rooms / training rooms
- public meeting spaces
- café and restaurant area
- car parking
- WiFi access to all areas
- informal internet café serving all working areas
- design suite
- health suite
- fitness training room
- small / large meeting rooms
- domiciliary care training house

Aims and objectives include:

- supporting the wider Alumwell community, with an emphasis on:
 - education
 - training
 - employment

6.21 One to One Meetings / Strategic Workshops

As outlined at [Section 4](#), we have taken opportunity to meet a wide range of individuals and representatives of partner-agency and local organisations, with responsibility for supporting the needs and aspirations of the wider Alumwell community. The following is a summary of such meetings and conversations:

- There is a clear need and will for faith organisations on the Alumwell estate to collaborate and work together for the benefit of Alumwell community members. Key representatives of the Church at Junction 10, St Johns Church, Minhaj-UI-Quran Mosque
- We have always welcomed support from faith organisations, and look forward to developing even stronger links and initiatives. Key representatives of Alumwell based schools / education establishments

- A key role will be to add value to what we do during the day. For example, young people really need support with life skills and how to cope in this complex world Head Teacher Alumwell Junior School
- We are looking forward to developing close partnership links with community based organisations on the Alumwell estate such as the Gateway Enterprise Centre Walsall College
- We look forward to developing closer working partnership with all Alumwell based organisations. We have a lot of knowledge, expertise and support freely available to voluntary groups and community based organisations who are looking to deliver neighbourhood based youth services in a professional, safe and legal manner Local Authority Youth Services
- We are looking forward to developing links with local community based organisations to work with us to take full advantage of the area achieving Enterprise Zone status Local Authority Regeneration Team
- We are confident that local businesses will look forward to working in partnership and supporting community based organisations that are looking to develop the skills and abilities of young and old living on the Alumwell estate Chamber of Commerce
- We are pleased to see faith based organisations and other community groups meeting and working together for the benefit of the Alumwell community. We cannot tackle issues such as crime, anti-social behaviour and hate crime without such support. We look forward to developing and supporting even stronger links with such organisations West Midlands Police
- It does not matter what faith you are. We all have the same needs and dreams. We just need to work closer together to achieve them Member of the Minhaj-UI-Quran Mosque
- Our Church is wonderful and is always there to support us. We need to work within the Alumwell estate and make a real difference Member of the Church at Junction 10
- There is nothing to do and nowhere to go on the Alumwell estate. We just need Youth Clubs close to where we live and somewhere safe to meet and socialise. Young people
- A challenge the Alumwell community faces is that community members lack the drive, skills, confidence and ambition to help themselves Anon

7.0 Summary of Research Findings

7.1 Introduction

A key objective of this section is to summarise our findings in a format that informs and supports the roles and responsibilities of local organisations and partner-agency members whose objectives include supporting the Alumwell community. Findings are based on both quantitative and qualitative research carried out as a result of this commission.

7.2 Population

In terms of population, Alumwell is diverse, predominantly Christian, with a significant percentage of the population representing the Muslim community. It is noted that the area has a higher percentage of 10 to 17 year olds than surrounding areas, and England as a whole.

This is a significant issue in relation to the Alumwell estate, as there is clearly a need to focus on the needs and aspirations of a diverse younger group of community members. It is our experience that on such deprived estates, failure to do so is likely to result in future neighbourhood based challenges, such as youth related:

- unemployment
- alcohol / drug / substance abuse
- crime / anti-social behavior
- hate crimes / racism
- radicalisation

7.3 Community Resources

There remains a lack of appropriate venues and resources that meet the needs of the wider Alumwell community (see [Section 5.6](#)). For example, the Go Alumwell Go group has recently struggled to find a base to deliver community based youth activities from, and it remains difficult for community based groups and individuals to find ideal locations to socialise and hold meetings and events.

We do however note recent developments, with particular regard to positive steps under way by the Church at Junction 10, the Minhaj-UI-Quran Mosque / Gateway Enterprise Centre and the Alumwell Innovation Centre (see [Sections 6.13, 6.16 & 6.20](#)).

7.4 Deprivation Issues

There can be no doubt that the Alumwell estate remains an area of significant deprivation compared with Walsall, the West Midlands and England as a whole (see [Section 5.7](#)). This is particularly the case in terms of education, economic activity, unemployment and health.

We do however note the following recent improvements:

- significant reductions in anti-social behaviour in comparison with other areas (see [Section 5.8](#))
- significant improvements in the percentage of pupils achieving 5 plus A Star GCSE and equivalent grades (see [Section 5.9](#))

7.5 Community Consultation / Field Research

As highlighted at [Section 4.3](#) we have taken the opportunity to focus our efforts, as far as feasible, on communicating directly with representatives of the Alumwell community and partner-agency members. As a result, we are confident that our findings present a significant opportunity to understand key issues such as:

- the needs and aspirations of local community members
- gaps in local services and facilities

7.6 Partner-Agency Members' Responses

We feel it is significant that despite the best efforts of Wider Impact Consultancy, the Walsall South Area Partnership and the Church at Junction 10 that of the 169 questionnaires circulated to support / partner-agency organisations, only 22 questionnaires were returned for analysis. Of such responses:

- just 5 organisations stated that they have developed links or partnerships with Alumwell faith based organisations
- just 8 organisations stated they were aware of Alumwell based community organisations

This could clearly be evidence of a lack of multi-agency partner-agency working / focus on the Alumwell estate. It is however significant that a number of the organisations have stated they would welcome opportunities to work closer with Alumwell based faith groups / voluntary sector organisations, with an understanding that there is a need to improve communications and neighbourhood based partnerships.

7.7 Community Consultation

We have been particularly impressed with responses from members of the Alumwell community and those connected to the Church at Junction 10 and Minhaj-UI-Quran Mosque. Our experience indicates that this is a clear indicator of community interest and potential for community action in relation to the community becoming directly involved in the regeneration of their local neighbourhood.

We have particularly noted in-depth understanding of key issues and ways forward. In particular:

- there is a general awareness of the key deprivation issues
- there is a general awareness across all age groups of the need to develop a sense of community well-being that enables the community to become more pro-active in terms of tackling the key deprivation issues
- there is an awareness across all age groups of a lack of facilities, meeting places and neighbourhood based activities to meet the needs of the Alumwell community
- there is a consensus of opinion that available facilities such as the Church at Junction 10, St Johns Church and the Minhaj-UI-Quran Mosque / Gateway Enterprise Centre are well placed to support the needs of the wider Alumwell community
- there is however a consensus of opinion that the above buildings need to be more accessible, and are in urgent need of modernisation if they are to meet the long-term needs of the Alumwell community
- given the opportunity, local community members are able and willing to be consulted; particularly in relation to supporting the development of local facilities (see [Section 6.10 / Appendix A – ‘Meet the Architect’](#))
- young people are concerned about issues such as anti-social behaviour, hate crimes / racism / drugs and alcohol abuse

- young people would value safe spaces to play and socialise
- young people in particular would value support in the form of role models / champions, and support linked to 'life skills'
- there is a need to support the wider community (young and old) develop their capacity to break cycles of deprivation, focusing on:
 - education
 - training
 - employment
 - health / fitness

7.8 Site Visits

As outlined at [Section 6.12](#), we have visited Alumwell based community venues. It is our view that on the whole:

- local organisations, in particular the Church at Junction 10, St Johns Church and the Minhaj-UI-Quran Mosque / Gateway Enterprise Centre and the Alumwell Innovation Centre / E-Act Academy are well placed to support the needs and aspirations of the wider Alumwell community. Services could for example include:
 - delivery of 'front-line' services e.g. Food Banks
 - central meeting places / hub sites for community members to meet with key services, such as housing offices, social services, health, Police, regeneration teams, Job Centre staff
 - job clubs
 - health / fitness
 - recreation / community meeting places e.g. luncheon clubs for the elderly; Youth Drop-In Centres / youth clubs (see [Appendix A](#))
 - arts / theatre productions
 - conference facilities
 - meeting rooms / 'hot desks' e.g. bases for smaller community based organisations / social enterprises to meet / organise activities / events

- a number of local community based groups are aiming to deliver neighbourhood based youth services. In relation to the Church at Junction 10 and the Minhaj-UI-Quran Mosque, there appears to be room for improvements in terms of:
 - health and safety issues – due to, for example, facilities not being suitable for such work, and the need for formal risk assessment being carried out in accordance with national and local authority guidelines
 - staff lacking full training, qualifications and expertise to deliver youth work in accordance with national and local authority guidelines
- significant capital and revenue investment is urgently required to enable the Church at Junction 10, St Johns Church and the Minhaj-UI-Quran Mosque / Gateway Enterprise Centre to develop and deliver the support and resources required to fully meet the needs and expectations of the Alumwell community
- the Alumwell Innovation Centre is a first class resource that has the potential to support the needs of the Alumwell community.

A strength of the building is its potential to act as community based hub site, where community action could be co-ordination from / by partner-agency members and local community groups / organisations

7.9 One to One Meetings / Strategic Workshops

Section 6.21 provides a summary of conversations and meetings with a wide range of individuals and representatives of partner-agency and local organisations. In short:

- representatives of the organisations consulted are apparently willing to work in partnership to meet the needs and expectations of the Alumwell community.
- there is an urgent need for local community based organisations / faith groups to collaborate more, and work more strategically with each other and key partner agencies, such as the local authority departments / teams and the Walsall Area Partnership to:
 - take full advantage of the skills and expertise available from public sector organisations
 - avoid duplication and replication of resources
 - make best use of current and planned facilities

- develop and deliver innovative and much needed joint initiatives, projects and programmes
- where appropriate, submit joint funding applications to support the delivery of joint initiatives, projects and programmes
- meet the varied and complex needs and aspirations of both young and older local community members
- there is an urgent need for faith based organisations and other voluntary sector organisations to enhance and develop buildings / facilities, such as the Church at Junction 10, St Johns Church and the Minhaj-UI-Quran Mosque / Gateway Enterprise Centre to:
 - meet the complex and varied needs and aspirations of local community members
 - take advantage of revenue opportunities, such as hiring out meeting rooms / conference facilities

8.0 Recommendations

8.1 Introduction

On the basis of the findings of this report and our experience of advising multi-agency partnerships support deprived communities similar to the Alumwell estate, the following recommendations are tendered:

1. This report should be shared with all agencies and organisations with responsibilities for tackling deprivation and supporting members of the Alumwell community; ideally at a multi-agency event.
2. Aims of such a multi-agency event should include:
 - a. partner-agency members / Alumwell based organisations agreeing to work in close partnership for the benefit of the Alumwell community.
 - b. acknowledgement of the role faith based organisations and the Alumwell Innovation Centre can play in tackling deprivation and supporting members of the Alumwell community
 - c. acknowledgement of the role community members (young and old) can play in tackling deprivation and supporting members of the Alumwell community
 - d. agreement to adopt a neighbourhood based multi-agency approach on the Alumwell estate, which will directly involve Alumwell based organisations and local community members
 - e. partner-agency members collaborating and working together to develop the capacity and capability of Alumwell based organisations and local community members to work together for the benefit of the Alumwell community. This should include supporting organisations securing necessary funding; with particular reference to [Recommendation 4](#)
3. Consideration should be given to appointing a Neighbourhood Based Coordinator, with aims that include coordinating and supporting the delivery of [Recommendation 4](#). The post holder could be line managed by one of the locally based agencies such as the Church at Junction 10, with direct support from key partner-agency members. Funding for this post could be linked to [Recommendation 4 \(b\)](#).

4. Based on the concept of the delivery of a neighbourhood based multi-agency approach on the Alumwell estate, individual organisations such as the Church at Junction 10, St Johns Church and the Minhaj-UI-Quran Mosque / Gateway Enterprise Centre should:
 - a. continue to build on their strengths, retaining their individual values; continuing to offer and provide individual and unique services to the local community
 - b. engage in closer collaborative work, with aims that include:
 - i. working in close partnership with other community [faith] based organisations for the benefit of the Alumwell community
 - ii. exploring opportunities to apply for joint funding / initiatives to tackle the deprivation issues highlighted at [Section 5.7](#)
 - c. urgently modernise / update their premises, with aims that include the delivery of services such as:
 - i. delivery of 'front-line' services e.g. Food Banks
 - ii. central meeting places / hub sites for community members to meet with key services, such as housing offices, social services, health, Police, regeneration teams, JobCentre Plus staff
 - iii. Job Clubs
 - iv. health / fitness
 - v. recreation / community meeting places e.g. luncheon clubs for the elderly; Youth Drop-In Centres / youth clubs (see [Appendix A](#))
 - vi. arts / theatre productions
 - vii. conference facilities
 - viii. meeting rooms / 'hot desks' e.g. bases for smaller community based organisations / social enterprises to meet / organise activities / events from

5. In the case of the Church at Junction 10, we note the particular challenges highlighted at [Section 6.14](#). It is therefore our view that it is likely that the most appropriate course of action will be to re-build the Church / meeting / conference facilities on its current site. Reasons include:
 - a. the organisation has a positive and meaningful role to play in tackling deprivation and supporting members of the Alumwell community

- b. the current location is ideal. It is close to the M6 motorway, local bus / transport routes, and has excellent car parking facilities
- c. previous attempts to modernise the building have on the whole failed, and have added to problems such as poor disabled access, cramped, dated and unsuitable offices, meeting rooms and storage facilities
- d. an inability to make best use of available floor / office space, resulting in an inability to properly support the Alumwell community, and raise sufficient revenue funding (e.g. room hire, delivery of conferences and events) to support the upkeep and general running costs of the building
- e. based on a report carried out by expert architects, it is apparent that cost of re-building far out-weighs the cost and inconvenience of further attempts to modernise the building

9.0 Conclusions

9.1 Introduction

There can be no doubt that the Alumwell estate remains a deprived area, in urgent need of support from multi-agency partners that includes community based organisations and local community members.

It is clear that the area faces a number of challenges that include:

- a need for all agencies / local organisations to collaborate and work together to tackle deprivation and meet the needs and aspirations of community members
- a need to build the capacity and capability of local organisations and community members to become directly involved in the regeneration of the area
- a lack of appropriately equipped community based premises to support the regeneration of the estate

9.2 Good Practice

We make due note of positive achievements on the Alumwell estate, which have occurred during the period of support from the Fair Share Trust, such as:

- neighbourhood based youth provision
- significant reductions in anti-social behaviour
- direct support for community based groups
- improvements in education achievements
- the creation of the Gateway Enterprise Centre
- the creation of Sort All Limited
- the excellent work of organisations such as the Church at Junction 10, with the provision of initiatives such as the Food Bank and neighbourhood based community support

9.3 Future Challenges

This report has clearly identified the lack of:

- community based capacity and capability to tackle key deprivation issues highlighted at [Section 5.7](#)
- appropriately equipped venues to coordinate and support the delivery of a much needed neighbourhood based multi-agency approach on the Alumwell estate

9.4 The Way Forward

It is clear that the venues researched are ideally placed to play a pivotal role in meeting future challenges on the Alumwell estate.

It is our view that all locally based organisations should:

- support the concept of the delivery of a much needed neighbourhood based multi-agency approach on the Alumwell estate
- build on their strengths, retaining their individual values; continuing to offer and provide individual and unique services to the local community
- develop strategic alliances with other community based organisations / venues; maximising resources and joint potential, and avoiding duplication and replication of effort and resources
- where appropriate, with the support of partner-agency members, urgently modernise and update buildings and facilities
- train and skill human resources, to meet the challenges and opportunities identified by this report

We are confident that our recommendations listed at [Section 8](#) will directly assist in supporting the delivery of the Walsall Fair Share Trust Programme priorities outlined at [Section 3](#).

Appendix B

Minhaj-UI-Quran Mosque Workshop – Male Committee Members

Question 1

What do you think is missing in Alumwell for the Community?

- Platform to bring them together
- Day Centre for the old people
- Sport Centre for youth
- Mixed activities
- Community Centre
- Pensioner Drop-In Centre
- Youth Centre
- Female training
- Young People facilities (sport & education)
- Facility for young people where they can go to play other than the streets
- Large community place
- Old people Centre
- Classrooms for community use
- Youth / old men
- Leisure club
- Inter-faith Dialogue Centre
- Guidance
- Advice Centre (jobs, career, benefits etc.)
- Easy approach

Question 2

What do you feel should be the main aims / objectives of the new Community Centre?

- Integration (x2)
- Sense of unity
- Sport, health and education
- Modernity
- Bring people of all races and young old together
- Provide training for locals & advice & regular meetings
- Place for old people
- To interact with all ethics
- Health / sport
- Meeting place
- Sports Centre
- Community come together
- Space for large events
- Education for people
- Joint work

Question 3

What facilities would you like to see there?

- Media Centre (x3)
- Sport Centre (x3)
- Education awareness on health issues (x2)
- Meeting room
- Classroom
- Safety for old people

- Job Centre
- Library
- Language Classes
- Leisure club
- Drop In Centre
- Seminar room
- Conference rooms / hall
- Youth space
- Place for disabled

Question 4

What challenges do you think will be faced as we develop the Community Centre?

- Racism (x2)
- To bring people together
- Make sure Community Centre facilitate
- Man power
- Day to day running, getting people joining together
- Money
- Trained volunteers
- Sustainability (revenue)
- State of building

Question 5

How do you feel you could contribute to the Community Centre?

- Sport skills (x2)
- Management Committee
- Education (x2)
- Advice / help
- Record keeping

Wish List

- Free meals for elderly
- Help for homeless
- Need for the community to come together
- Ladies training classes
- Celebration of community events
- Gym
- Free community transport
- Transport for disabled & elderly
- Free sports activities for youth
- See the Centre up, running and operative
- Youth facilities for young lads
- Help for refugees, homeless, old people
- Daytrips / events for elderly
- Trips for community
- Hold health advisory sessions
- Training for unemployed
- Cultural events
- Day trips for disabled

Appendix C

Minhaj-UI-Quran Mosque Workshop – Female Members

Question 1

What do you think is missing in Alumwell for the Community?

- Youth Centre (x6)
- Community Centre (x3)
- Multicultural Centre (x3)
- Somewhere to get elders to get together (x2)
- Women's Centre (x2)
- Ladies gym
- Education for women
- Advice Centre
- Employment training
- Internet Café
- Coffee morning
- Library
- Chill out place
- Child care
- Weekend clubs: Tuitions for children / training courses
- Health & Fitness children activities

Question 2

What do you feel should be the main aims / objectives of the new Community Centre?

- Bring culture together (x6)
- To support youth (x3)
- Play scheme in school holiday (x2)

- Safety place for children / youth (x2)
- More activities for children / money to support mosque / for children to stay out of trouble
- To get youth off the street
- Multicultural community
- Turn this community into a happier place

Question 3

What facilities would you like to see there?

- Crèche (x6)
- Swimming class (x4)
- Family trips (x4)
- Gym fitness centre (x3)
- Language classes (x3)
- Yoga class (x3)
- Ault courses
- Advice Centre
- Tuition for children
- Computer facilities
- Library
- Education Centre
- Mother and toddler groups
- Elderly Centre

Question 4

What challenges do you think will be faced as we develop the Community Centre?

- Bring all cultures together (x4)
- Financial cost (x4)
- Funding grants (x3)
- Males disagree (x3)
- Bring community together (x2)
- Disagreement due to mosque upstairs (x2)
- Competing with other Centres
- Objections from local people
- Racism
- Working together could be issue

Question 5

How do you feel you could contribute to the Community Centre?

- Volunteer Child Minder
- Health Trainer
- HR Manager
- Admin Assistant
- Cleaner
- Help in kitchen
- Help keep tidy
- Committee member
- Use the Centre

Wish list

- Jobs
- Training
- Money for the Mosque
- Advice centre
- Crèche
- Women's' Gym
- Playground
- Ladies Spa
- Swimming pool for ladies
- Elderly Centre
- Bring all the communities of Alumwell together
- Get kids off street
- Bring all cultures together
- To make Alumwell a happier community

Appendix D

Minhaj-UI-Quran Mosque Workshop – Youth Members

Question 1

What do you think is missing in Alumwell for the Community?

- Sports / Activity Centre (x12)
- Library (x5)
- Youth Centre (x4)
- Multi-culture / Leisure Centre (x3)
- Career / Advice Bureau (x2)
- Community Centre (x2)
- Snooker Pool Club (x2)
- Swimming club
- Kids to have sports equipment
- Trips for youth
- Practical courses
- Bring the community together
- Rehabilitation Centre

Question 2

What do you feel should be the main aims / objectives of the new Community Centre?

- Homework club (x3)
- Bring people together (x3)
- Involve all members of the community (x2)
- Provide facilities for disabled people (x2)
- Multi-culturalism
- Getting all ages together

- Fulfil needs
- To cage the electric plant boxes
- Social club
- Eradicate racism
- Place to chill out and have fun
- Community cohesion
- Facilities for the community
- Improve health, get rid of obesity
- Youth committee
- To be nice / helpful / provide the best service
- To attract youth

Question 3

What facilities would you like to see there?

- Gym, sports hall (x15)
- Room for studying / Promote education (x8)
- Boxing / Martial arts (x7)
- Swimming pool (x4)
- Games areas (x3)
- Facilities for people of all ages (x2)
- Internet access (x2)
- Chill out area (x2)
- Self-defence classes (x2)
- Conference facilities
- Researcher Centre
- Promote peace / integration

- Provide funny activities
- Multi-faith room
- Kitchen for cookery classes
- To make people have enjoyment
- Counselling
- BBQ
- Library
- Cinema
- Playground for kids
- Outdoor garden
- Facilities for disabled people
- Rehabilitation Centre
- Vending machine
- Nice toilets / new clean kitchen / safe area

Question 4

What challenges do you think will be faced as we develop the Community Centre?

- Racism (x7)
- Difficult to attract people who have different faith (x4)
- Financial issues (x3)
- Conflicts between different races (x2)
- Trying to attack people / bullying fights
- Clash between ownership
- Jealousy
- Encourage people to join the Centre
- Riots

- Accessibility public/ transport
- Getting everyone to work together
- Police

Question 5

How do you feel you could contribute to the Community Centre?

- Volunteer (x4)
- Committee member (x3)
- Employee (x3)
- Funds and donations (X3)
- Join it / run a fund generation campaign for it working with the younger community
- Attend
- Youth rep / spokeswoman
- Tutor
- By giving new ideas
- Cashier / finance management

Wish list

- After school club: football / martial arts / gym / internet (x2)
- Fitness Centre (x2)
- Snooker table / basketball courses / cookery class (x2)
- Trips in theme park
- Go to lots of trips and have a nice house in the future
- Camping equipment
- Rock climbing
- Juice and Smoothie bar
- Models

- Hair salon for ladies
- Car wash
- Playground
- Unexpired food
- Don't serve over dated food
- Lounge
- Changing rooms



Thank you for taking the time to complete this short questionnaire, which will be used as part of a **Needs Analysis** of the Alumwell Community, which has been funded by the **Birmingham & Black Country Community Foundation Fair Share Trust**.

Personal Information	
Name
Organisation
Job Title
Phone No
Email

Please briefly describe your / your organisation's key aim (s) / objective(s)

Section 1	
Have you or your organisation developed links or partnerships with the following Alumwell community based establishments?	
<i>(Please tick all that apply)</i>	
The Church at Junction 10 (Wolverhampton Road)	<input type="checkbox"/>
Minhaj-UI-Quran Mosque (Woodward Road)	<input type="checkbox"/>
St John's Church (Scarborough Road)	<input type="checkbox"/>
Sikh Temple (Wellington Street)	<input type="checkbox"/>
Other <i>(please specify)</i>	
I / we have never worked in partnership / developed links with any Alumwell community based establishments	<input type="checkbox"/>
<i>(If appropriate)</i> Please describe the nature of your partnership working / links with the above establishment(s)	

Section 2 (if appropriate)

How would you rate the following regarding Alumwell community based establishments?

(1 is low – 5 is high) (0 – no views)

The partnership working / links we have been involved in plays a positive role in supporting my / my organisation's aims and objectives	0 1 2 3 4 5
Those I work with are helpful and accessible	0 1 2 3 4 5
I am aware of the aims and objectives of the Alumwell community based establishments	0 1 2 3 4 5
I would value the opportunity to be more aware of how they could support my / my organisation's aims and objectives / roles etc.	0 1 2 3 4 5

Section 3 (if appropriate)

Please list up to 3 ways Alumwell community based establishments could support your aims and objectives in the future

- 1.
- 2.
- 3.

Section 4 (please continue on a separate sheet of paper if necessary)

1. **What do you feel have been the local challenges for Alumwell, and how were they achieved by investing in local assets?**

2. **What outcomes do you feel Fair Share has achieved in Alumwell?**

Anything else you wish to add (including lessons learnt)? (please continue on a separate sheet of paper if necessary)

Data Protection Please tick the following box, if you **do not** want your details retained and utilised for wider monitoring and marketing purposes.

For further information / contributions please contact **Edwin Lewis** at Wider Impact Consultancy on 0845 165 0491, or email edwin@widerimpact.com



Thank you for taking the time to complete this short questionnaire, which will be used as part of our research into the Church at Junction10 Needs Analysis.

Personal Information

Name

Gender Male Female

Ethnic Origin

Age **Postcode**

Employment Status

Registered disabled Yes No

Section 1
Have you ever utilised the facilities at the Church?

Yes No

If Yes, please complete the following. If No, please move to Section 2

For what purpose have you utilised the services at the Church?(please tick all that apply)

A place of Worship

To receive support

Recreation / to meet other people

Involvement in community activities / volunteering

Education / Training / Employment Support

Health / Fitness

Links / access to other support agencies

Other (please specify)

Section 2

I am aware of the Church at Junction 10 (*please tick*) **Yes** **No**

How would you rate the following
(1 is low – 5 is high) (0 – no views)

The Church meets my needs and expectations	0 1 2 3 4 5
It is a valuable resource that helps to deliver a stronger community	0 1 2 3 4 5
The Church supports the whole Alumwell community (young and old)	0 1 2 3 4 5
I find people at the Church helpful and accessible	0 1 2 3 4 5
The Church is easy to access in its current location	0 1 2 3 4 5
The car park, entrance to the Church, meeting rooms and facilities are easy to access	0 1 2 3 4 5
The Church, meeting rooms and facilities are fit for purpose	0 1 2 3 4 5

Section 3
Please list up to 3 ways the Church could improve on the services it offers to local community members

1.

2.

3.

Section 4
Please list up to 3 new activities / initiatives the Church should be involved in

1.

2.

3.

Anything else you wish to add? (*Please continue on a separate piece of paper if necessary*)

For further information, please contact **Edwin Lewis** at Wider Impact Consultancy on **0845 165 0491**, or email edwin@widerimpact.com

widerimpact

Independent Analysis. Strategic Reviews

Unit 103
Staffordshire University
Business Village Stoke
72 Leek Road
Stoke on Trent ST4 2AR
Tel: 0845 165 0491
Fax: 0845 165 0442
Email: enquiries@widerimpact.com
Web: www.widerimpact.com



Scan QR Code to visit website